

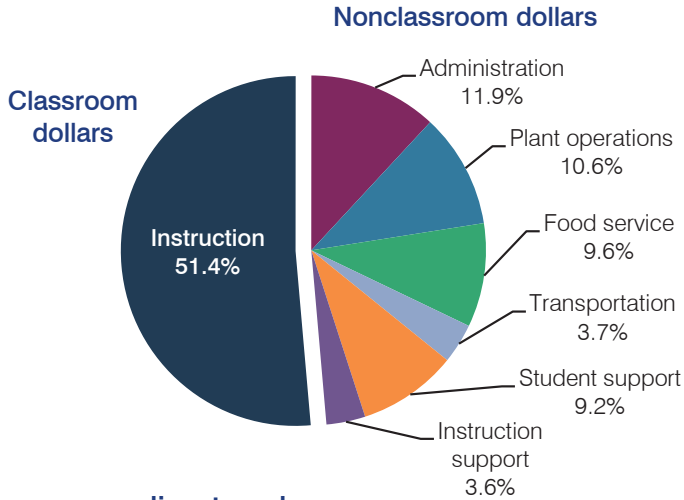
# Union Elementary School District

Maricopa County  
 Efficiency peer groups 8 and T-1, Achievement peer group 13  
 Legislative district(s): 19

District size, location: Medium, Suburb  
 Students attending: 1,657  
 Number of schools: 2

## OPERATIONAL EFFICIENCY

### Spending by operational area



### 5-year spending trend

Total spending per pupil increased by 6 percent. Spending in the classroom was very inconsistent year to year, decreasing overall from 55 to 51.4 percent. Spending on food service and student support increased substantially and spending on plant operations increased. Spending on administration decreased substantially and spending on instruction support decreased.

### Cost measures relative to peer averages

Operational area	Measure	District	Peer average	State average
Administration	Cost per pupil	\$753	\$791	\$746
	Students per administrator	82	69	67
Plant operations	Cost per square foot	\$5.49	\$6.28	\$6.03
	Square footage per student	122	138	153
Food service	Cost per meal equivalent	\$2.23	\$2.54	\$2.58
Transportation	Cost per mile	\$6.27	\$6.28	\$3.55
	Cost per rider	\$503	\$582	\$1,015

Very low Low Comparable High Very high

### Per pupil spending by operational area

	District		Peer average	State average	National average
	2012	2013	2013	2013	2011
<b>Total</b>	<b>\$6,427</b>	<b>\$6,316</b>	<b>\$7,193</b>	<b>\$7,496</b>	<b>\$10,658</b>
<b>Classroom dollars</b>	<b>3,457</b>	<b>3,247</b>	<b>3,672</b>	<b>4,031</b>	<b>6,520</b>
<b>Nonclassroom dollars:</b>	<b>2,970</b>	<b>3,069</b>	<b>3,521</b>	<b>3,465</b>	<b>4,138</b>
Administration	782	753	791	746	1,138
Plant operations	620	672	842	924	1,015
Food service	625	606	541	396	412
Transportation	241	233	273	369	452
Student support	551	579	541	582	593
Instruction support	151	226	533	448	528

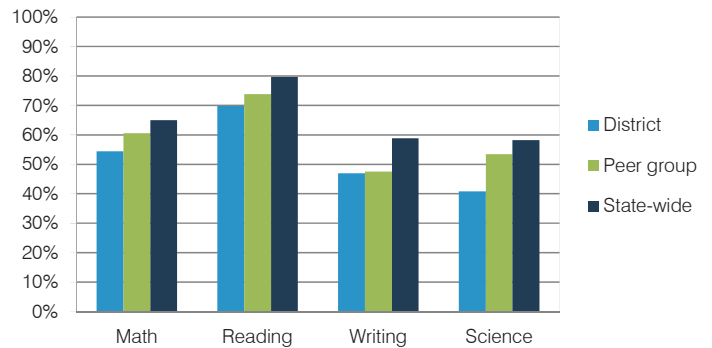
## STUDENT ACHIEVEMENT, TEACHER MEASURES, AND FINANCIAL ASSESSMENT

### ADE-reported district and school letter grades

District grade: **C**

Grade	Number of schools	Percentage of schools
A	0	0%
B	1	50%
C	1	50%
D	0	0%
F	0	0%
Not rated	0	0%

### Students who met state standards (AIMS)



### Student and teacher measures

Measure	District	Peer average	State average
Attendance rate	95%	95%	94%
Graduation rate (2012)	N/A	N/A	N/A
Poverty rate (2012)	24%	25%	25%
Students per teacher	20.7	19.1	18.3
Average teacher salary	\$40,253	\$40,312	\$45,264
Amount from Proposition 301	\$2,506	\$3,530	\$3,784
Average years of teacher experience	6.5	7.4	10.9
Percentage of teachers in first 3 years	32%	31%	19%

### Financial stress assessment

Overall financial stress level: **Low**

Measure: 2011 through 2013	Assessment
Number of students attending district	Increase
Spending exceeded operating/capital budgets	Capital only
Spending increase election results	No election held
Operating reserve percentage (max. 4%), trend	3.5%, Decreasing
Years of capital reserve held	More than 3 years
Current financial and internal control status	Compliant

