

Union Elementary School District

Maricopa County
Operational peer group: I
Legislative districts: 13, 23

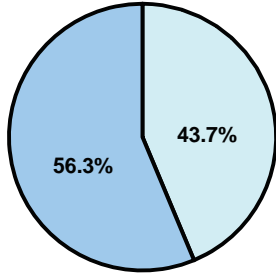
District size: Medium
Students attending: 1,646
Number of schools: 3

OPERATIONAL EFFICIENCY

Average per-pupil spending

District
State

Classroom
\$3,680
\$4,497



Nonclassroom
\$2,856
\$3,411

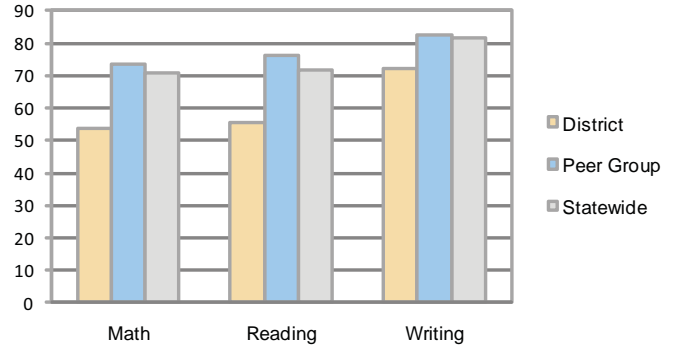
Total
\$6,536
\$7,908

5-year trend

Total spending per pupil increased by 17 percent. Spending in the classroom varied year to year and increased significantly overall from 50.2 to 56.3 percent. Spending on administration and transportation decreased significantly, while spending in other nonclassroom areas was very inconsistent year to year.

STUDENT ACHIEVEMENT AND TEACHER INFORMATION

Percentage of students meeting state standards (AIMS)



Adequate Yearly Progress (AYP) toward federal goals

2 schools met all applicable AYP objectives for NCLB. 1 did not because some students did not demonstrate sufficient academic progress.

Student and teacher information

Measure	District	Peer average	State average
Attendance rate	95%	95%	95%
Graduation rate (2008)	N/A	84%	75%
Poverty rate	16%	13%	19%
Student/teacher ratio	17.9	17.5	17.1
Average teacher salary	\$35,328	\$44,052	\$45,209
Average years' experience	5.1	8.4	8.3
Percent of teachers in first 3 years	47%	30%	16%

District's cost measures relative to peer group

Operational Area	Measure	District	Peer Average	State Average
Administration	Cost per pupil	\$777	\$840	\$729
	Students per administrator	99	69	66
Plant Operations	Cost per square foot	\$5.14	\$7.16	\$6.40
	Square footage per student	123	123	144
Food Service	Cost per meal equivalent	\$2.35	\$2.38	\$2.53
Transportation	Cost per mile	\$5.14	\$5.18	\$3.36
	Miles per rider	115	132	271

Very Low Low Comparable High Very High

Proposition 301

Teacher pay

On average, each teacher, speech pathologist, and counselor earned between \$2,250 and \$3,500 in additional salary.

Performance pay plan goals and results

Type of goal	Goal met?
Student achievement	▲
Dropout/ graduation rates	
Student attendance	
Parent/student satisfaction	
Teacher attendance	
Teacher professional development	
Teacher evaluations	
Tutoring	
Other	▲

■ = yes, □ = no, and ▲ = partially

Per-pupil spending by function

	District		Peer	State	National
	2008	2009	2009	2009	2007
Total	\$5,978	\$6,536	\$8,194	\$7,908	\$9,683
Classroom dollars	\$3,289	\$3,680	\$4,515	\$4,497	\$5,903
Nonclassroom dollars:	\$2,689	\$2,856	\$3,679	\$3,411	\$3,780
Administration	833	777	840	729	1,050
Plant Operations	569	633	890	920	951
Food Service	447	532	525	382	369
Transportation	198	228	253	343	406
Student Support	356	427	626	594	512
Instruction Support	286	259	545	431	470
Other	0	0	0	12	22