

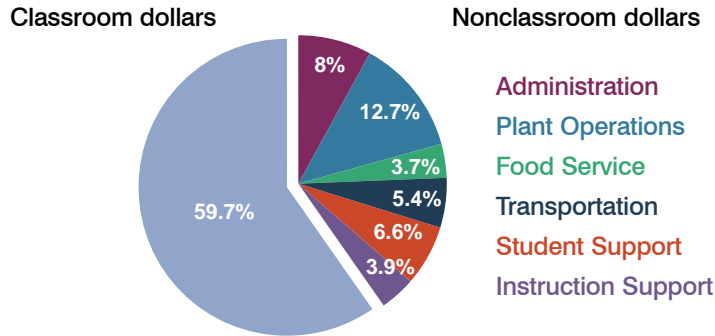
Vail Unified School District

Pima County
Peer groups: Efficiency 2, Achievement 16
Legislative district(s): 29 and 30

District size: Large
Students attending: 9,645
Number of schools: 16

OPERATIONAL EFFICIENCY

Spending by function



5-year trend

Total spending per pupil increased by 18 percent. Spending in the classroom remained fairly stable, but increased slightly overall from 58.5 to 59.7 percent. Spending on administration decreased, while spending on student support increased. Spending in other nonclassroom areas remained stable.

District's cost measures relative to peer group

Operational Area	Measure	District	Peer Average	State Average
Administration	Cost per pupil	\$542	\$627	\$721
	Students per administrator	58	68	66
Plant Operations	Cost per square foot	\$7.61	\$6.54	\$6.25
	Square footage per student	114	142	146
Food Service	Cost per meal equivalent	\$2.16	\$2.52	\$2.41
Transportation	Cost per mile	\$2.46	\$3.31	\$3.35
	Miles per rider	297	323	282

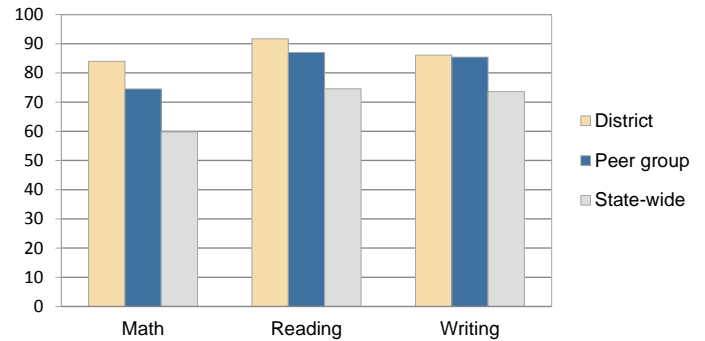
Very low Low Comparable High Very high

Per-pupil spending by function

	District		Peer 2010	State 2010	National 2008
	2009	2010			
Total	\$7,031	\$6,815	\$7,166	\$7,609	\$10,297
Classroom dollars	\$4,210	\$4,068	\$4,025	\$4,253	\$6,262
Nonclassroom dollars:	\$2,821	\$2,747	\$3,141	\$3,356	\$4,035
Administration	524	542	627	721	1,109
Plant Operations	809	865	917	914	1,003
Food Service	292	255	308	366	390
Transportation	391	368	326	342	438
Student Support	519	451	539	581	556
Instruction Support	286	266	424	432	539

STUDENT ACHIEVEMENT AND TEACHER INFORMATION

Percentage of students meeting state standards (AIMS)



Adequate Yearly Progress (AYP) toward federal goals

16 schools met all applicable AYP objectives for NCLB.

Student and teacher information

Measure	District	Peer Average	State Average
Attendance rate	94%	95%	94%
Graduation rate (2009)	90%	90%	76%
Poverty rate (2009)	8%	10%	21%
Student/teacher ratio	16.3	18.0	17.9
Average teacher salary	\$36,629	\$45,075	\$47,077
Average years' experience	7.5	10.4	10.6
Percent of teachers in first 3 years	26%	16%	20%

Proposition 301

Teacher and other staff pay

On average, each teacher earned \$4,552 in additional pay, and each speech pathologist, counselor, social worker, and behavior specialist earned between \$1,050 and \$3,616.

Performance pay plan goals and results

Type of goal	Goal met?
Student achievement	■
Dropout/graduation rates	-
Student attendance	-
Parent/student satisfaction	-
Teacher attendance	-
Teacher professional development	■
Teacher evaluations	■
Tutoring	-
Other	■

■ = yes, □ = no, ▬ = partially, and - = no goal set