

Vail Unified School District

Pima County
Operational peer group: B
Legislative districts: 29, 30

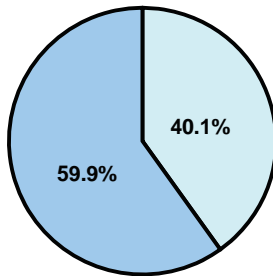
District size: Large
Students attending: 9,167
Number of schools: 16

OPERATIONAL EFFICIENCY

Average per-pupil spending

District
State

Classroom
\$4,210
\$4,497



Nonclassroom
\$2,821
\$3,411

Total
\$7,031
\$7,908

5-year trend

Total spending per pupil increased by 24 percent. Spending in the classroom remained fairly stable and increased slightly overall from 59 to 59.9 percent. Spending on administration and plant operations decreased significantly, while spending in other nonclassroom areas varied year to year.

District's cost measures relative to peer group

Operational Area	Measure	District	Peer Average	State Average
Administration	Cost per pupil	\$524	\$634	\$729
	Students per administrator	54	67	66
Plant Operations	Cost per square foot	\$6.75	\$6.67	\$6.40
	Square footage per student	120	142	144
Food Service	Cost per meal equivalent	\$2.55	\$2.64	\$2.53
Transportation	Cost per mile	\$2.39	\$3.44	\$3.36
	Miles per rider	245	290	271

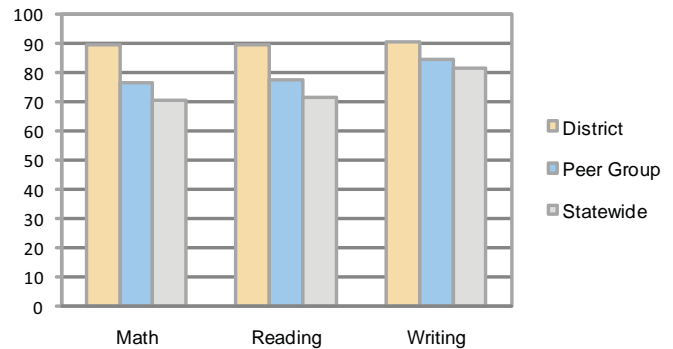
Very Low Low Comparable High Very High

Per-pupil spending by function

	District		Peer	State	National
	2008	2009	2009	2009	2007
Total	\$6,885	\$7,031	\$7,523	\$7,908	\$9,683
Classroom dollars	\$4,125	\$4,210	\$4,247	\$4,497	\$5,903
Nonclassroom dollars:	\$2,760	\$2,821	\$3,276	\$3,411	\$3,780
Administration	532	524	634	729	1,050
Plant Operations	821	809	936	920	951
Food Service	283	292	310	382	369
Transportation	373	391	359	343	406
Student Support	522	519	571	594	512
Instruction Support	222	279	443	431	470
Other	7	7	23	12	22

STUDENT ACHIEVEMENT AND TEACHER INFORMATION

Percentage of students meeting state standards (AIMS)



Adequate Yearly Progress (AYP) toward federal goals

13 schools met all applicable AYP objectives for NCLB. 3 failed to meet one or more of the following objectives: academic progress (1); attendance rate (2); graduation rate (1).

Student and teacher information

Measure	District	Peer average	State average
Attendance rate	95%	96%	95%
Graduation rate (2008)	90%	85%	75%
Poverty rate	7%	13%	19%
Student/teacher ratio	15.7	17.3	17.1
Average teacher salary	\$37,566	\$45,833	\$45,209
Average years' experience	7.3	9.1	8.3
Percent of teachers in first 3 years	30%	27%	16%

Proposition 301

Teacher pay

On average, each teacher earned \$5,691 in additional salary, and each librarian, speech pathologist, and counselor earned between \$4,508 and \$4,616.

Performance pay plan goals and results

Type of goal	Goal met?
Student achievement	■
Dropout/ graduation rates	
Student attendance	
Parent/student satisfaction	
Teacher attendance	
Teacher professional development	■
Teacher evaluations	■
Tutoring	■
Other	

■ = yes, □ = no, and ▴ = partially