

# Classroom Dollars and Proposition 301 Results

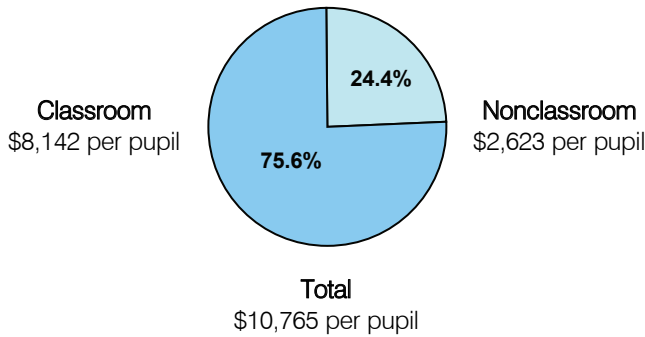
## Valentine Elementary School District

Mohave County

District size: Very Small  
 Students attending: 49  
 Number of schools: 1  
 Number of certified teachers: 4

### Classroom Dollars

Fiscal year 2005

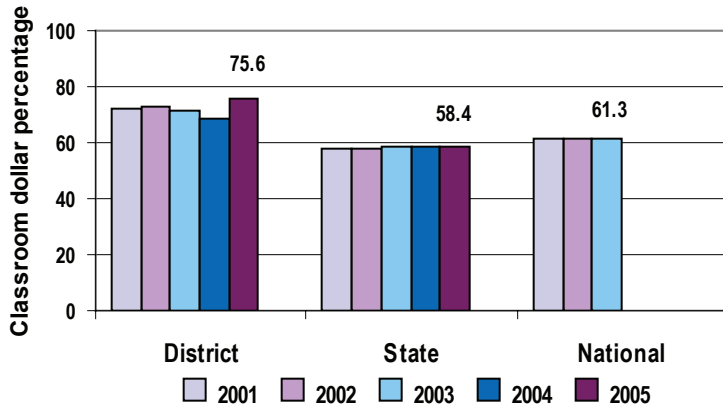


### Comparative Information

	District			State
	2003	2004	2005	2005
Student/teacher ratio	15.7	11.0	12.3	18.3
Average teacher salary	\$44,147	\$43,117	\$45,068	\$39,095
Average years' experience	12.3	13.5	13.7	8.5

Classroom dollar ranking: 2 of 228 districts.

### 5-year comparison



### Expenditures by function

	District					State	National
	2001	2002	2003	2004	2005	2005	2002
Classroom dollars	72.3	72.6	71.4	68.3	75.6	58.4	61.5
Nonclassroom dollars:							
Administration	11.7	10.8	12.4	10.3	10.5	9.5	11.1
Plant operations	10.0	8.1	10.1	10.0	8.0	11.4	9.5
Food service						4.8	4.0
Transportation	5.0	3.0	5.6	6.7	5.4	4.1	4.0
Student support	0.4					7.0	5.0
Instruction support	0.6	5.5	0.5	4.7	0.5	4.6	4.7
Other						0.2	0.2

### Proposition 301

#### District-reported 2005 results

##### Teacher pay

- On average, each teacher earned an additional \$2,630 in salary.

##### Performance

- The District accomplished its goals, which were the same as the prior fiscal year's goals, linked to teacher performance evaluations.

##### Menu

- Monies were used solely to increase teacher compensation.