

Classroom Dollars and Proposition 301 Results

Valentine Elementary School District

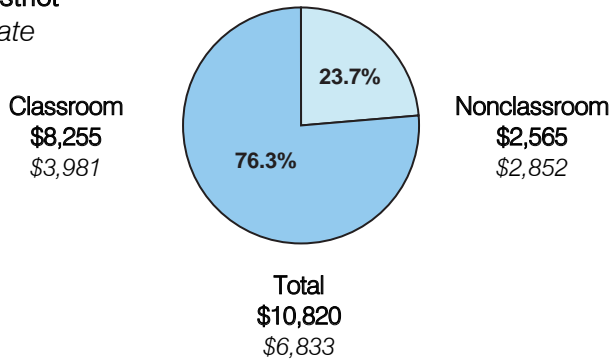
Mohave County

District size: Very Small
 Students attending: 57
 Number of schools: 1
 Number of certified teachers: 4

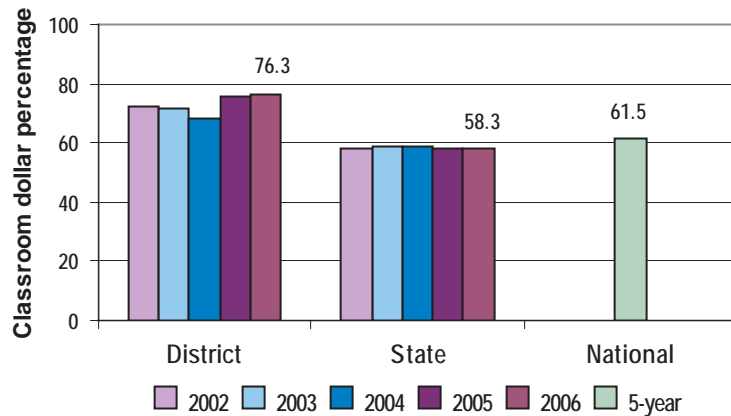
Classroom Dollars

Fiscal year 2006 averages per pupil

District
 State



5-year comparison



Expenditures by function

	Percentage					State 2006	National 5-year
	2002	2003	2004	2005	2006		
Classroom dollars	72.6	71.4	68.3	75.6	76.3	58.3	61.5
Nonclassroom dollars:							
Administration	10.8	12.4	10.3	10.5	9.9	9.4	11.0
Plant operations	8.1	10.1	10.0	8.0	7.4	11.2	9.6
Food service						4.7	3.9
Transportation	3.0	5.6	6.7	5.4	5.9	4.2	4.0
Student support						7.2	5.1
Instruction support	5.5	0.5	4.7	0.5	0.5	4.8	4.7
Other						0.2	0.2

Comparative Information

	District			State
	2004	2005	2006	2006
Student/teacher ratio	11.0	12.3	14.4	17.7
Average teacher salary	\$43,117	\$45,068	\$46,847	\$42,967
Average years' experience	13.5	13.7	11.0	8.3

Classroom dollar ranking: 2 of 229 districts.

Proposition 301

District-reported 2006 results

Teacher pay

- On average, each teacher earned an additional \$2,722 in salary.

Performance

- The District accomplished its goals, which were based on school and individual performance.
- Students had to meet AIMS test standards.
- Teachers had to receive acceptable performance evaluations.

Menu

- The District did not spend any menu monies in fiscal year 2006.