

# Valentine Elementary School District

Mohave County

Efficiency peer groups 11 and T-11, Achievement peer group 18

Legislative district(s): 5

District size, location:

Very small, Rural

Students attending:

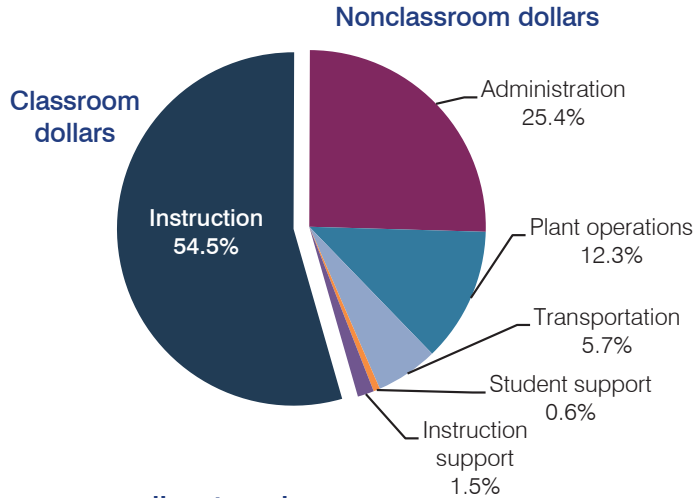
62

Number of schools:

1

## OPERATIONAL EFFICIENCY

### Spending by operational area



### 5-year spending trend

Total spending per pupil increased by 3 percent. Spending in the classroom varied year to year, decreasing overall from 77.3 to 54.5 percent. Spending on most nonclassroom areas also varied year to year, as is common for very small districts. Overall, spending on administration and plant operations increased substantially and spending on instruction support increased.

### Cost measures relative to peer averages

| Operational area | Measure                    | District | Peer average | State average |
|------------------|----------------------------|----------|--------------|---------------|
| Administration   | Cost per pupil             | \$2,585  | \$2,572      | \$746         |
|                  | Students per administrator | 31       | 30           | 67            |
| Plant operations | Cost per square foot       | \$5.81   | \$6.59       | \$6.03        |
|                  | Square footage per student | 215      | 343          | 153           |
| Food service     | Cost per meal equivalent   | N/A      | \$4.93       | \$2.58        |
| Transportation   | Cost per mile              | \$1.63   | \$1.64       | \$3.55        |
|                  | Cost per rider             | \$589    | \$1,184      | \$1,015       |

### Per pupil spending by operational area

|                              | District       |                 | Peer average    | State average  | National average |
|------------------------------|----------------|-----------------|-----------------|----------------|------------------|
|                              | 2012           | 2013            | 2013            | 2013           | 2011             |
| <b>Total</b>                 | <b>\$9,546</b> | <b>\$10,161</b> | <b>\$15,203</b> | <b>\$7,496</b> | <b>\$10,658</b>  |
| <b>Classroom dollars</b>     | <b>6,573</b>   | <b>5,535</b>    | <b>7,647</b>    | <b>4,031</b>   | <b>6,520</b>     |
| <b>Nonclassroom dollars:</b> | <b>2,973</b>   | <b>4,626</b>    | <b>7,556</b>    | <b>3,465</b>   | <b>4,138</b>     |
| Administration               | 1,408          | 2,585           | 2,572           | 746            | 1,138            |
| Plant operations             | 716            | 1,250           | 2,148           | 924            | 1,015            |
| Food service                 | 0              | 0               | 851             | 396            | 412              |
| Transportation               | 661            | 576             | 1,056           | 369            | 452              |
| Student support              | 81             | 65              | 548             | 582            | 593              |
| Instruction support          | 107            | 150             | 381             | 448            | 528              |

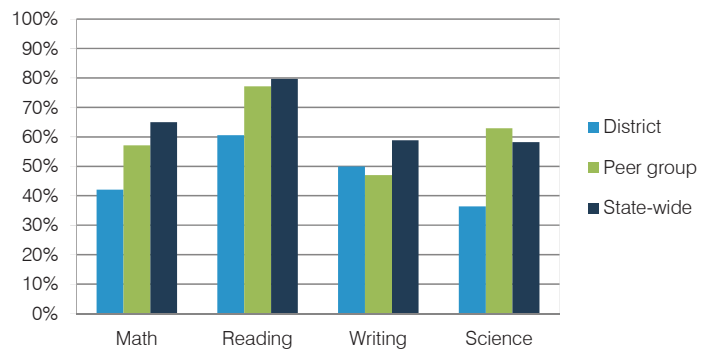
## STUDENT ACHIEVEMENT, TEACHER MEASURES, AND FINANCIAL ASSESSMENT

### ADE-reported district and school letter grades

District grade: **B**

| Grade     | Number of schools | Percentage of schools |
|-----------|-------------------|-----------------------|
| A         | 0                 | 0%                    |
| B         | 1                 | 100%                  |
| C         | 0                 | 0%                    |
| D         | 0                 | 0%                    |
| F         | 0                 | 0%                    |
| Not rated | 0                 | 0%                    |

### Students who met state standards (AIMS)



### Student and teacher measures

| Measure                                 | District | Peer average | State average |
|---|----------|--------------|---------------|
| Attendance rate                         | 92%      | 95%          | 94%           |
| Graduation rate (2012)                  | N/A      | N/A          | N/A           |
| Poverty rate (2012)                     | 23%      | 24%          | 25%           |
| Students per teacher                    | 12.5     | 12.4         | 18.3          |
| Average teacher salary                  | \$42,554 | \$45,242     | \$45,264      |
| Amount from Proposition 301             | \$1,500  | \$2,827      | \$3,784       |
| Average years of teacher experience     | 7.2      | 13.6         | 10.9          |
| Percentage of teachers in first 3 years | 40%      | 12%          | 19%           |

### Financial stress assessment

Overall financial stress level: **Low**

Measure: 2011 through 2013

Assessment

|   |                         |
|---|-------------------------|
| Number of students attending district         | Small school adjustment |
| Spending exceeded operating/capital budgets   | No overspending         |
| Spending increase election results            | No election held        |
| Operating reserve percentage (max. 4%), trend | 4.0%, Steady            |
| Years of capital reserve held                 | More than 3 years       |
| Current financial and internal control status | Not assessed            |

Stress level

