

Classroom Dollars and Proposition 301 Results

Valentine Elementary School District

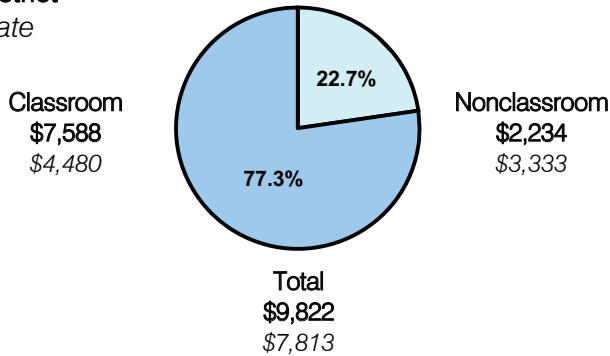
Mohave County

District size: Very Small
 Students attending: 66
 Number of schools: 1
 Number of certified teachers: 4

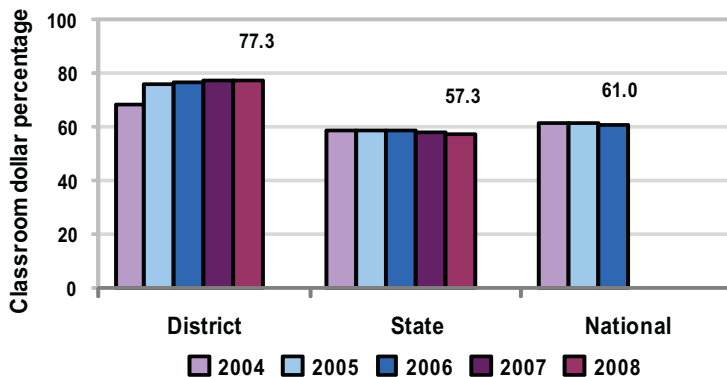
Classroom Dollars

Fiscal year 2008 averages per pupil

District
 State



5-year comparison



Expenditures by function

	Percentage					State 2008	National 2006
	District						
	2004	2005	2006	2007	2008		
Classroom dollars	68.3	75.6	76.3	77.3	77.3	57.3	61.0
Nonclassroom dollars:							
Administration	10.3	10.5	9.9	9.5	8.0	9.2	10.8
Plant operations	10.0	8.0	7.4	8.1	9.2	11.3	9.9
Food service						4.8	3.8
Transportation	6.7	5.4	5.9	4.7	5.5	4.4	4.2
Student support						7.4	5.2
Instruction support	4.7	0.5	0.5	0.4		5.4	4.9
Other						0.2	0.2

Comparative Information

	District			State 2008
	2006	2007	2008	
Student/teacher ratio	14.4	12.5	16.5	17.3
Average teacher salary	\$46,847	\$46,847	\$51,396	\$44,967
Average years' experience	11.0	7.3	8.3	8.1

Classroom dollar ranking: 1 of 230 districts.

Proposition 301

District-reported 2008 results

Teacher pay

- On average, each teacher earned an additional \$4,014 in salary.

Performance

- The District accomplished its goals, which were the same as the prior fiscal year's goals and were based on school and individual performance.
- Students had to demonstrate Adequate Yearly Progress.
- Teachers had to receive acceptable performance evaluations.

Menu

- The District did not report spending any menu monies in fiscal year 2008.