

Washington Elementary School District

Maricopa County

Efficiency peer groups 7 and T-3, Achievement peer group 14

Legislative district(s): 20, 24, 28, and 30

District size, location:

Very large, City

Students attending:

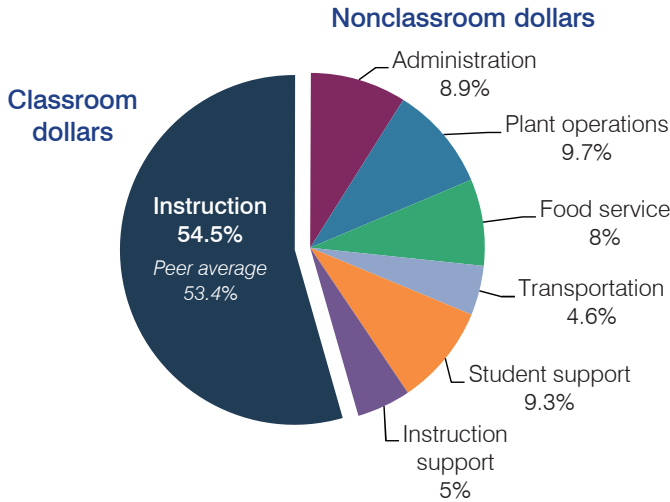
21,900

Number of schools:

32

OPERATIONAL EFFICIENCY

Spending by operational area



Efficiency measures relative to peer averages

Operational area	Measure	District	Peer average	State average
Administration	Cost per pupil	\$718	\$709	\$780
	Students per administrative position	79	78	67
Plant operations	Cost per square foot	\$5.79	\$5.82	\$6.09
	Square footage per student	134	128	153
Food service	Cost per meal equivalent	\$2.49	\$2.62	\$2.79
Transportation	Cost per mile	\$4.27	\$3.90	\$3.66
	Cost per rider	\$1,229	\$957	\$1,071

Very low Low Comparable High Very high

Per pupil spending

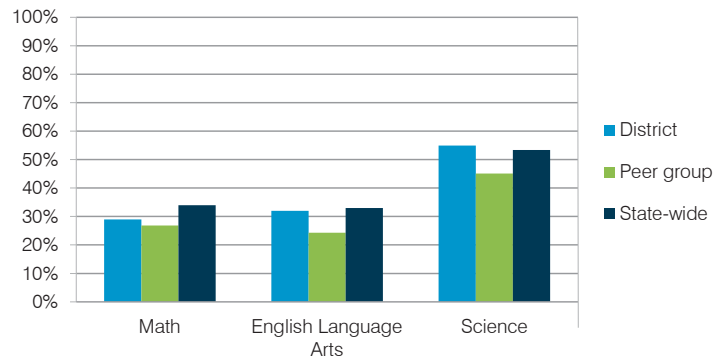
Spending by area	District		Peer average	State average
	2014	2015	2015	2015
Instruction	\$ 4,288	\$ 4,368	\$ 3,943	\$ 4,105
Administration	695	718	709	780
Plant operations	836	775	738	930
Food service	628	639	539	417
Transportation	349	370	301	371
Student support	700	746	564	613
Instruction support	401	400	470	442
Total operational	\$ 7,897	\$ 8,016	\$ 7,264	\$ 7,658
Land and buildings	\$ 328	\$ 226	\$ 643	\$ 641
Equipment	132	170	432	383
Interest	184	169	179	225
Other	142	147	188	150
Total nonoperational	\$ 786	\$ 712	\$ 1,442	\$ 1,399
Total per pupil spending	\$ 8,683	\$ 8,728	\$ 8,706	\$ 9,057

STUDENT AND TEACHER MEASURES, FINANCIAL ASSESSMENT, AND REVENUE

Student and teacher measures

Measure	District	Peer average	State average
Attendance rate	94%	94%	94%
Graduation rate (2014)	N/A	N/A	N/A
Poverty rate (2014)	33%	36%	23%
Students per teacher	15.7	17.5	18.6
Average teacher salary	\$39,547	\$42,232	\$46,008
Average years of teacher experience	10.7	9.1	11.0
Percentage of teachers in first 3 years	23%	30%	20%

Students who met state standards



Financial stress assessment

Overall financial stress level: **Low**

Measure: 2013 through 2015

Assessment

Change in number of district students	Increase
Spending exceeded operating/capital budgets	No overspending
Spending increase election results	Mixed election results
Operating reserve percentage (max. 4%), trend	4.0%, Steady
Years of capital reserve held	1 to 3 years
Current financial and internal control status	Compliant

Low Moderate High

Per pupil revenues

Revenues by source	District		Peer average	State average
	2014	2015	2015	2015
Federal	\$ 1,584	\$ 1,682	\$ 1,468	\$ 1,299
State	4,140	4,252	3,973	3,517
Local	3,414	3,409	3,380	4,248
Total revenues per pupil	\$ 9,138	\$ 9,343	\$ 8,821	\$ 9,064
Select revenues from common sources				
Equalization formula funding	\$ 5,222	\$ 5,137	\$ 4,915	\$ 5,303
Grants	1,647	1,688	1,502	1,167
Donations and tax credits	33	36	42	78
Select revenues from less common sources				
Desegregation	\$ 291	\$ 290	4 of 10	
Small school adjustment	0	0	0 of 10	
Federal impact aid	0	0	2 of 10	
Voter-approved levy increases	1,445	1,451	10 of 10	

Washington ESD—page 2

Classroom dollar percentage

Year:	2001	2002	2003	2004	2005	2006	2007	2008	2009	2010	2011	2012	2013	2014	2015
Percentage:	64.0	62.3	62.3	61.3	60.8	62.0	60.3	57.6	57.5	55.5	55.9	55.7	54.1	54.3	54.5

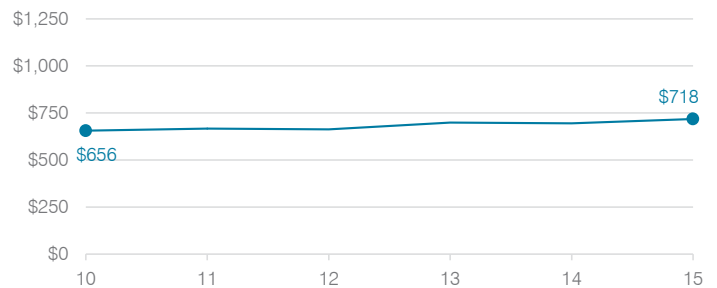
OPERATIONAL TRENDS

Fiscal years as indicated

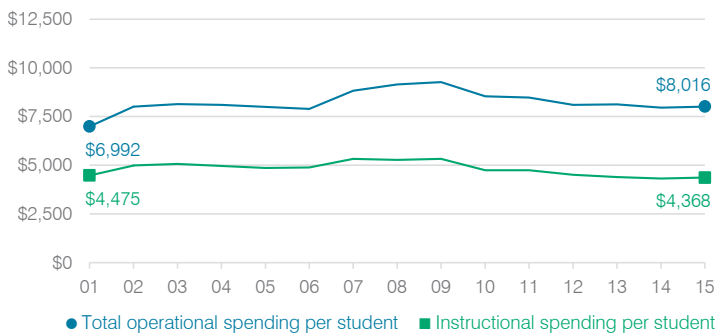
5-year spending trend (2010 through 2015)

Total operational spending per pupil, adjusted for inflation, decreased by 6 percent. The percentage of dollars spent in the classroom decreased overall from 55.5 to 54.5 percent. As a percentage of total operational spending, student support increased and food service increased slightly, while plant operations and instruction support decreased slightly. Administration and transportation remained stable.

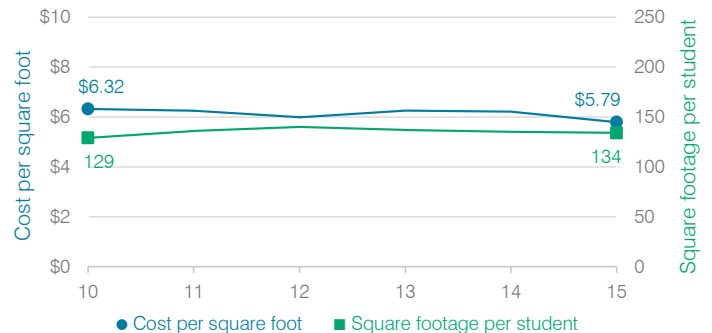
Administrative cost per student



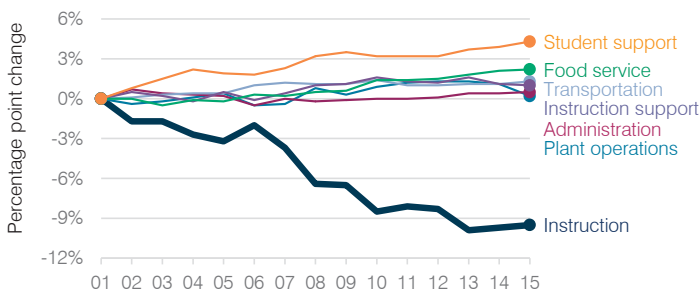
Total operational and instructional spending per student (inflation adjusted to 2015 dollars)



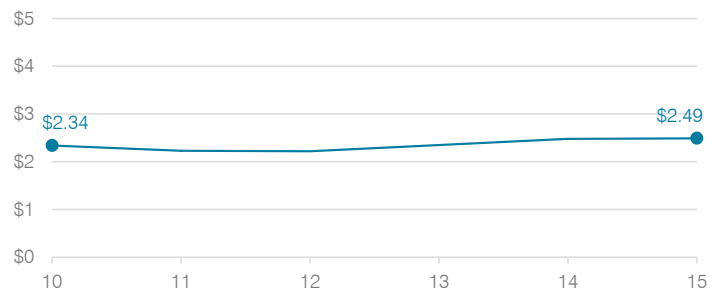
Plant cost per square foot and square footage per student



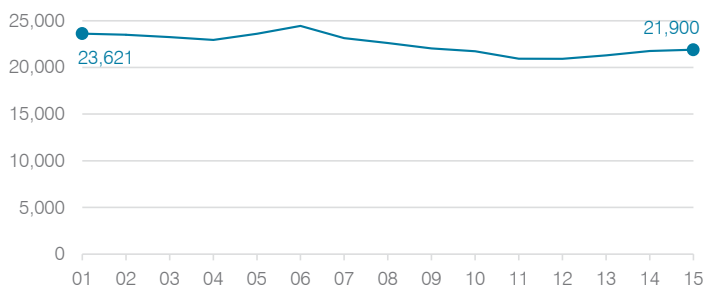
Changes in operational spending percentages



Food service cost per meal



Students attending



Transportation costs per mile and per rider

