

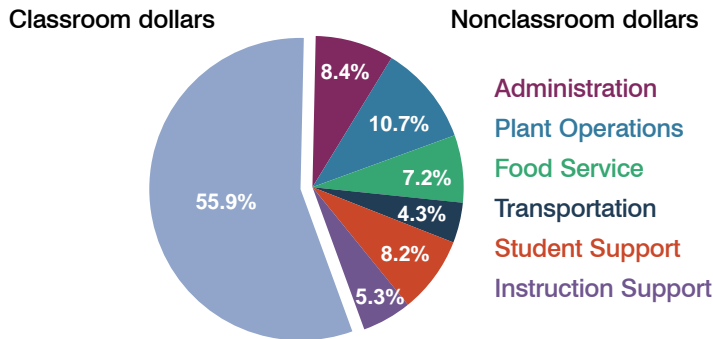
Washington Elementary School District

Maricopa County
Peer groups: Efficiency Group 8, Achievement Group 15
Legislative district(s): 6, 10, 11, 12, 14 and 15

District size: Very Large
Students attending: 20,940
Number of schools: 32

OPERATIONAL EFFICIENCY

Spending by operational area



5-year trend

Total spending per pupil increased by 19 percent. Spending in the classroom decreased significantly from 62 to 55.9 percent. Overall, spending on plant operations, food service, student support, and instruction support increased, while spending on all other nonclassroom remained fairly stable.

District's cost measures relative to peer group

Operational Area	Measure	District	Peer Average	State Average
Administration	Cost per pupil	\$667	\$648	\$728
	Students per administrator	44	71	66
Plant Operations	Cost per square foot	\$6.25	\$6.32	\$6.10
	Square footage per student	136	130	152
Food Service	Cost per meal equivalent	\$2.23	\$2.29	\$2.45
Transportation	Cost per mile	\$4.64	\$4.66	\$3.39
	Miles per rider	239	180	283

Very low Low Comparable High Very high

Per-pupil spending by operational area

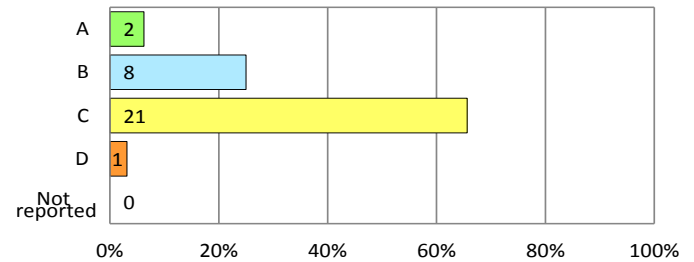
	District		Peer 2011	State 2011	National 2009
	2010	2011			
Total	\$7,826	\$7,919	\$7,201	\$7,485	\$10,591
Classroom dollars	\$4,344	\$4,427	\$4,033	\$4,098	\$6,456
Nonclassroom dollars:	\$3,482	\$3,492	\$3,168	\$3,387	\$4,135
Administration	656	667	648	728	1,147
Plant Operations	814	851	789	927	1,033
Food Service	563	570	467	375	404
Transportation	372	342	273	352	443
Student Support	640	646	498	571	573
Instruction Support	437	416	493	434	535

STUDENT ACHIEVEMENT AND TEACHER INFORMATION

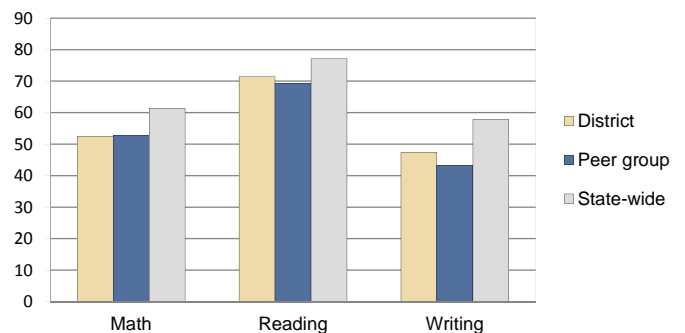
District and school letter grades

District grade: **C**

School grades (number and percentage):



Percentage of students meeting state standards (AIMS)



Student and teacher information

Measure	District	Peer Average	State Average
Attendance rate	95%	95%	95%
Graduation rate (2010)	N/A	N/A	N/A
Poverty rate (2010)	28%	31%	22%
Students per teacher	16.7	17.1	18.1
Average teacher salary	\$44,850	\$41,467	\$45,637
Average years of experience	11.5	9.6	10.9
Percent of teachers in first 3 years	15%	20%	16%

Proposition 301 pay, goals, and results

Average additional salary earned by teachers: \$3,276

Type of goal	Goal met?
Student achievement	■
Dropout/graduation rates	-
Student attendance	■
Parent/student satisfaction	■
Teacher attendance	■
Teacher professional development	■
Teacher evaluations	■
Tutoring	■
Other	■

■ = yes, □ = no, ▲ = partially, and - = no goal set