

# Washington Elementary School District

Maricopa County  
Operational peer group: H  
Legislative districts: 6, 10, 11, 12, 14, 15

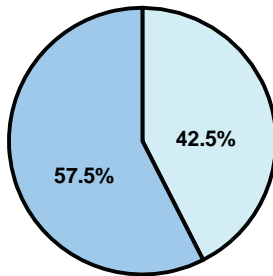
District size: Very Large  
Students attending: 22,036  
Number of schools: 32

## OPERATIONAL EFFICIENCY

### Average per-pupil spending

District  
State

Classroom  
\$4,833  
\$4,497



Nonclassroom  
\$3,574  
\$3,411

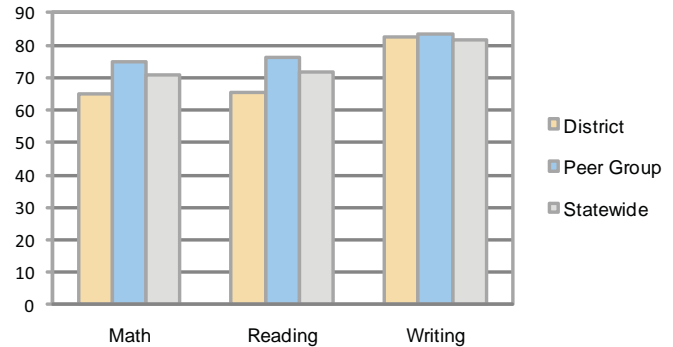
Total  
\$8,407  
\$7,908

### 5-year trend

Total spending per pupil increased by 32 percent. Spending in the classroom varied year to year and decreased significantly overall from 61.3 to 57.5 percent. Spending on student support and instruction support increased significantly, while spending in other nonclassroom areas remained fairly stable.

## STUDENT ACHIEVEMENT AND TEACHER INFORMATION

### Percentage of students meeting state standards (AIMS)



### Adequate Yearly Progress (AYP) toward federal goals

25 schools met all applicable AYP objectives for NCLB. 7 did not because some students did not demonstrate sufficient academic progress.

### District's cost measures relative to peer group

Operational Area	Measure	District	Peer Average	State Average
Administration	Cost per pupil	\$695	\$705	\$729
	Students per administrator	40	67	66
Plant Operations	Cost per square foot	\$6.50	\$6.62	\$6.40
	Square footage per student	127	120	144
Food Service	Cost per meal equivalent	\$2.20	\$2.44	\$2.53
Transportation	Cost per mile	\$5.31	\$4.77	\$3.36
	Miles per rider	269	197	271

Very Low Low Comparable High Very High

### Student and teacher information

Measure	District	Peer average	State average
Attendance rate	95%	96%	95%
Graduation rate (2008)	N/A	86%	75%
Poverty rate	18%	14%	19%
Student/teacher ratio	16.4	17.5	17.1
Average teacher salary	\$46,555	\$50,748	\$45,209
Average years' experience	10.8	10.5	8.3
Percent of teachers in first 3 years	26%	20%	16%

### Proposition 301

#### Teacher pay

On average, each teacher earned an additional \$5,989 in salary, and each librarian, speech pathologist, counselor, student services specialist and program coach earned between \$4,374 and \$6,848 in additional salary.

#### Performance pay plan goals and results

Type of goal	Goal met?
Student achievement	▲
Dropout/ graduation rates	■
Student attendance	■
Parent/student satisfaction	■
Teacher attendance	■
Teacher professional development	■
Teacher evaluations	■
Tutoring	■
Other	■

■ = yes, □ = no, and ▲ = partially

### Per-pupil spending by function

	District		Peer	State	National
	2008	2009	2009	2009	2007
<b>Total</b>	<b>\$8,187</b>	<b>\$8,407</b>	<b>\$7,808</b>	<b>\$7,908</b>	<b>\$9,683</b>
<b>Classroom dollars</b>	<b>\$4,716</b>	<b>\$4,833</b>	<b>\$4,486</b>	<b>\$4,497</b>	<b>\$5,903</b>
<b>Nonclassroom dollars:</b>	<b>\$3,471</b>	<b>\$3,574</b>	<b>\$3,322</b>	<b>\$3,411</b>	<b>\$3,780</b>
Administration	671	695	705	729	1,050
Plant Operations	841	827	786	920	951
Food Service	515	542	494	382	369
Transportation	362	368	272	343	406
Student Support	670	715	536	594	512
Instruction Support	411	427	529	431	470
Other	1	0	0	12	22