

Classroom Dollars and Proposition 301 Results

Washington Elementary School District

Maricopa County

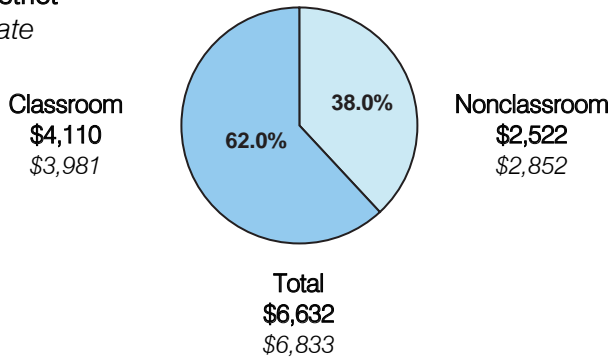
District size: Very Large
 Students attending: 24,450
 Number of schools: 32
 Number of certified teachers: 1,311

Classroom Dollars

Fiscal year 2006 averages per pupil

District

State

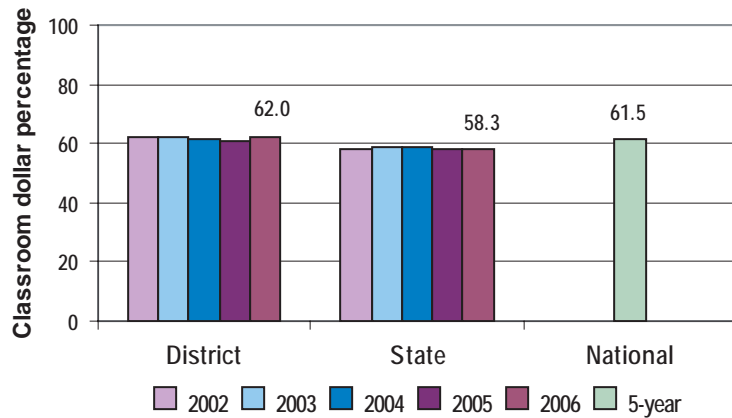


Comparative Information

	District			State
	2004	2005	2006	2006
Student/teacher ratio	17.8	18.5	18.7	17.7
Average teacher salary	\$44,650	\$49,987	\$51,357	\$42,967
Average years' experience	10.3	9.5	9.2	8.3

Classroom dollar ranking: 21 of 229 districts.

5-year comparison



Expenditures by function

	District					State	National
	2002	2003	2004	2005	2006	2006	5-year
Classroom dollars	62.3	62.3	61.3	60.8	62.0	58.3	61.5
Nonclassroom dollars:							
Administration	9.1	8.8	8.7	8.6	7.9	9.4	11.0
Plant operations	9.1	9.3	9.6	9.9	9.0	11.2	9.6
Food service	5.8	5.3	5.7	5.6	6.1	4.7	3.9
Transportation	3.4	3.6	3.7	3.7	4.3	4.2	4.0
Student support	5.8	6.5	7.2	6.9	6.8	7.2	5.1
Instruction support	4.5	4.2	3.8	4.5	3.9	4.8	4.7
Other						0.2	0.2

Proposition 301

District-reported 2006 results

Teacher pay

- On average, each teacher, librarian, speech pathologist, and audiologist earned between \$6,327 and \$6,501 in additional salary.

Performance

- The District accomplished its goals, which were the same as the prior fiscal year's goals and were based on district, school, and individual performance.
- Student achievement was measured using AIMS and district assessment scores.
- Teachers participated in professional development activities, leadership activities, such as site councils and school leadership teams, and tutoring, remediation, enrichment, and extracurricular activities.
- Other goals were linked to student attendance rates, teacher evaluations, and parent satisfaction survey results.
- The District also had a goal of maintaining a safe and inviting school environment.

Menu

- Monies were used solely to increase eligible employee compensation.