

# Classroom Dollars and Proposition 301 Results

# Washington Elementary School District

District size: Very Large

Students attending: 23,609

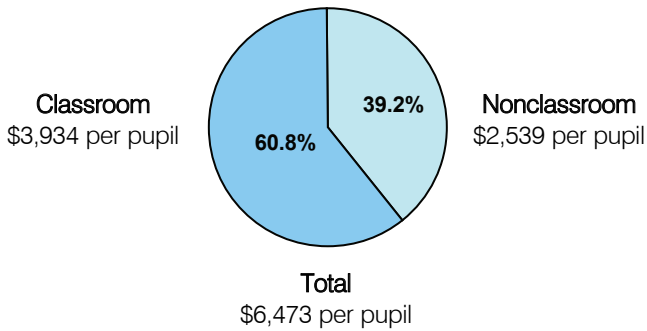
Number of schools: 32

Number of certified teachers: 1,277

Maricopa County

## Classroom Dollars

Fiscal year 2005

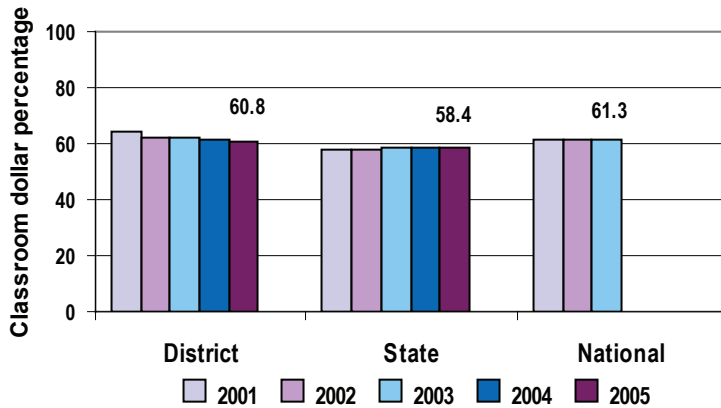


## Comparative Information

|                           | District |          |          | State    |
|---------------------------|----------|----------|----------|----------|
|                           | 2003     | 2004     | 2005     | 2005     |
| Student/teacher ratio     | 17.3     | 17.8     | 18.5     | 18.3     |
| Average teacher salary    | \$44,365 | \$44,650 | \$49,987 | \$39,095 |
| Average years' experience | 10.2     | 10.3     | 9.5      | 8.5      |

Classroom dollar ranking: 35 of 228 districts.

## 5-year comparison



## Expenditures by function

|                       | Percentage |      |      |      |      | State 2005 | National 2002 |
|-----------------------|------------|------|------|------|------|------------|---------------|
|                       | 2001       | 2002 | 2003 | 2004 | 2005 |            |               |
| Classroom dollars     | 64.0       | 62.3 | 62.3 | 61.3 | 60.8 | 58.4       | 61.5          |
| Nonclassroom dollars: |            |      |      |      |      |            |               |
| Administration        | 8.4        | 9.1  | 8.8  | 8.7  | 8.6  | 9.5        | 11.1          |
| Plant operations      | 9.5        | 9.1  | 9.3  | 9.6  | 9.9  | 11.4       | 9.5           |
| Food service          | 5.8        | 5.8  | 5.3  | 5.7  | 5.6  | 4.8        | 4.0           |
| Transportation        | 3.3        | 3.4  | 3.6  | 3.7  | 3.7  | 4.1        | 4.0           |
| Student support       | 5.0        | 5.8  | 6.5  | 7.2  | 6.9  | 7.0        | 5.0           |
| Instruction support   | 4.0        | 4.5  | 4.2  | 3.8  | 4.5  | 4.6        | 4.7           |
| Other                 |            |      |      |      |      | 0.2        | 0.2           |

## Proposition 301

### District-reported 2005 results

#### Teacher pay

- On average, each teacher earned an additional \$5,874 in salary; each librarian earned an additional \$5,959; and each speech pathologist and audiologist earned an additional \$6,658.

#### Performance

- The District accomplished its goals, which were based on school and individual performance.
- Student achievement was measured using AIMS and district assessment scores.
- Teachers participated in professional development activities, leadership activities such as site councils and school leadership teams, and tutoring, remediation, enrichment, and extracurricular activities.
- Other goals were linked to student attendance rates, teacher evaluations, and parent satisfaction survey results.
- The District also had a goal of maintaining a safe and inviting school environment.

#### Menu

- Monies were used solely to increase eligible employee compensation.