

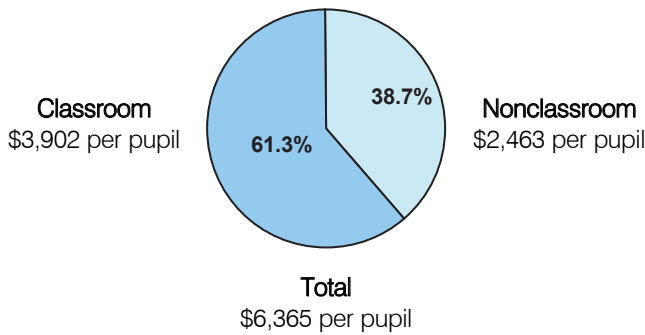
# Classroom Dollars and Proposition 301 Results

## Washington Elementary School District

District size: Very Large  
 Students attending: 22,952  
 Number of schools: 32  
 Number of certified teachers: 1,286

### Classroom Dollars

Fiscal year 2004

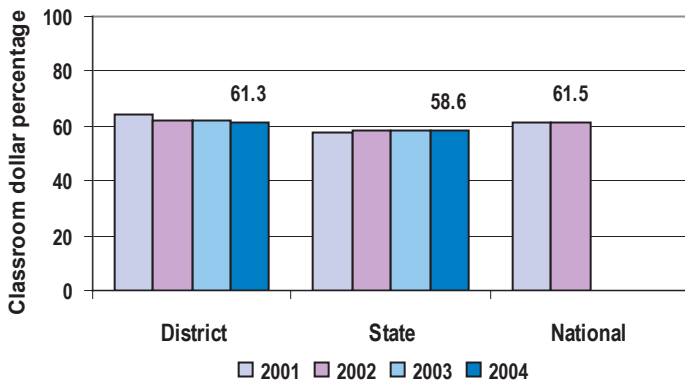


### Comparative Information

	District			State
	2002	2003	2004	2004
Student/teacher ratio	16.3	17.3	17.8	18.2
Average teacher salary	\$39,790	\$44,365	\$44,650	\$38,534
Average years' experience	10.0	10.2	10.3	8.7

Classroom dollar ranking: 31 of 227 districts.

### 4-year comparison



### Expenditures by function

	Percentage					
	District				State	National
	2001	2002	2003	2004	2004	2001
Classroom dollars	64.0	62.3	62.3	61.3	58.6	61.5
Nonclassroom dollars:						
Administration	8.4	9.1	8.8	8.7	9.5	10.9
Plant operations	9.5	9.1	9.3	9.6	11.7	9.7
Food service	5.8	5.8	5.3	5.7	4.7	4.0
Transportation	3.3	3.4	3.6	3.7	4.0	4.1
Student support	5.0	5.8	6.5	7.2	7.0	5.0
Instruction support	4.0	4.5	4.2	3.8	4.3	4.6
Other					0.2	0.2

### Proposition 301

#### District-reported 2004 results

##### Teacher pay

- On average, each teacher earned an additional \$5,098 in salary, each librarian earned an additional \$5,997, and each speech pathologist and audiologist earned an additional \$5,289. Additionally, 1 part-time counselor was eligible for performance pay and earned an additional \$1,801.

##### Performance

- The District accomplished its goals, which were based on district, school, and individual performance.
- Through its school improvement process, the District identified 8 goals. Schools determined their status in relation to the goals and documented progress.
- To meet student achievement goals, teachers analyzed students' reading, writing, and math test scores to guide instructional planning.
- Teachers were evaluated and participated in leadership committees and acted as mentors.
- Schools conducted an annual parent satisfaction survey and, based on results, 4 schools set goals for increasing parent involvement.

##### Menu

- Monies were used solely to increase eligible employee compensation.