

# Classroom Dollars and Proposition 301 Results

## Wellton Elementary School District

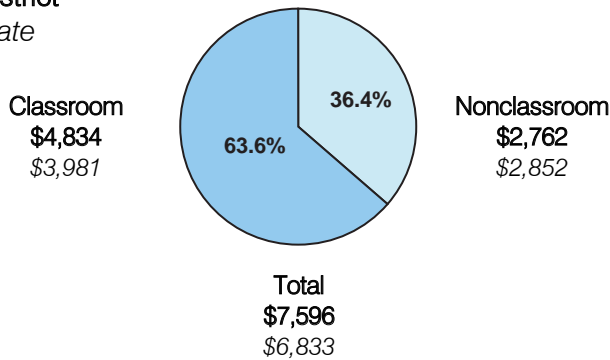
Yuma County

District size: Small  
 Students attending: 380  
 Number of schools: 1  
 Number of certified teachers: 23

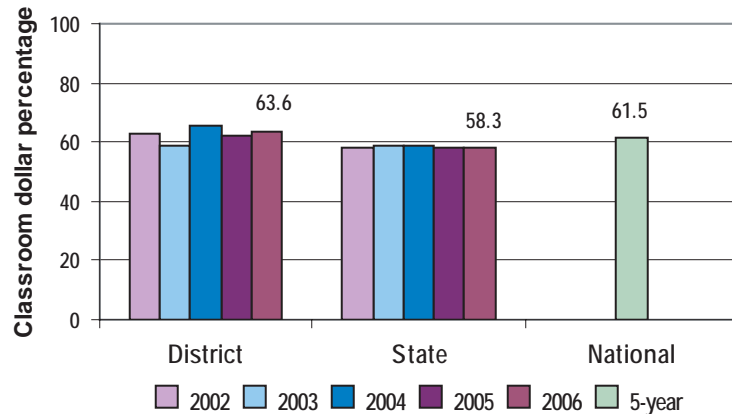
### Classroom Dollars

Fiscal year 2006 averages per pupil

District  
 State



### 5-year comparison



### Expenditures by function

	District					State 2006	National 5-year
	2002	2003	2004	2005	2006		
Classroom dollars	62.9	59.0	65.5	62.3	63.6	58.3	61.5
Nonclassroom dollars:							
Administration	10.8	11.0	9.6	11.1	10.0	9.4	11.0
Plant operations	10.2	12.5	10.3	10.4	10.1	11.2	9.6
Food service	5.7	6.4	5.7	5.9	6.4	4.7	3.9
Transportation	2.7	2.2	2.0	2.5	2.4	4.2	4.0
Student support	5.9	1.1	0.7	0.7	2.3	7.2	5.1
Instruction support	1.8	7.8	6.2	7.1	5.2	4.8	4.7
Other						0.2	0.2

### Comparative Information

	District			State 2006
	2004	2005	2006	
Student/teacher ratio	15.4	15.5	16.5	17.7
Average teacher salary	\$36,839	\$38,395	\$42,105	\$42,967
Average years' experience	8.6	9.2	8.8	8.3

Classroom dollar ranking: 11 of 229 districts.

### Proposition 301

#### District-reported 2006 results

##### Teacher pay

- On average, each teacher earned an additional \$7,203 in salary.

##### Performance

- The District accomplished its goals, which were similar to the prior fiscal year's goals and were based on school and individual performance.
- Teachers were compensated on a per-student basis for students who scored 69 percent and above or 75 percent and above on standardized tests.
- Other goals were linked to student attendance, teacher development, and parent-student satisfaction.

##### Menu

- Monies were primarily used to increase teacher compensation for accomplishing student achievement performance goals.
- Teachers were also compensated for participating in teacher development activities.