

Classroom Dollars and Proposition 301 Results

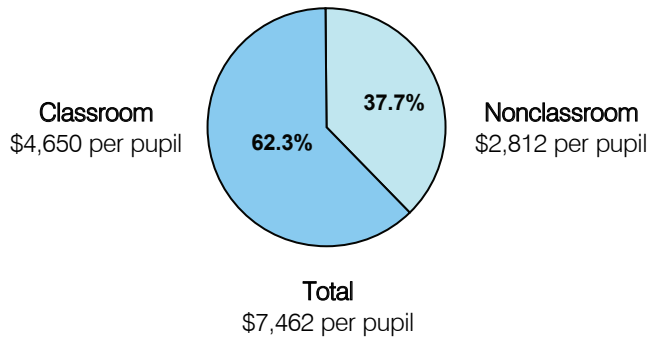
Wellton Elementary School District

Yuma County

District size: Small
 Students attending: 357
 Number of schools: 1
 Number of certified teachers: 23

Classroom Dollars

Fiscal year 2005

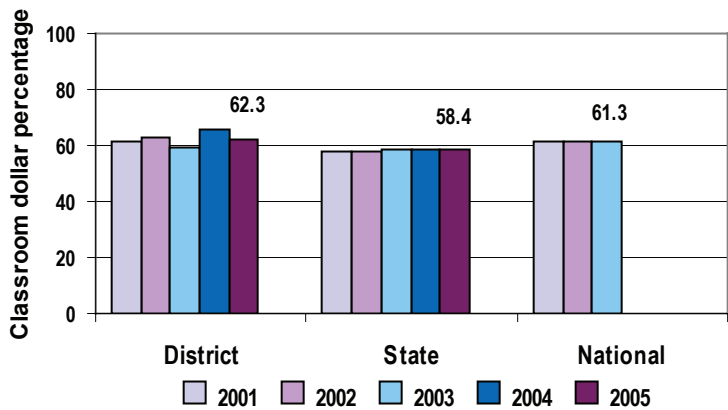


Comparative Information

	District			State
	2003	2004	2005	2005
Student/teacher ratio	16.6	15.4	15.5	18.3
Average teacher salary	\$35,283	\$36,839	\$38,395	\$39,095
Average years' experience	8.0	8.6	9.2	8.5

Classroom dollar ranking: 23 of 228 districts.

5-year comparison



Expenditures by function

	Percentage						
	District					State	National
	2001	2002	2003	2004	2005	2005	2002
Classroom dollars	61.3	62.9	59.0	65.5	62.3	58.4	61.5
Nonclassroom dollars:							
Administration	13.0	10.8	11.0	9.6	11.1	9.5	11.1
Plant operations	10.2	10.2	12.5	10.3	10.4	11.4	9.5
Food service	6.2	5.7	6.4	5.7	5.9	4.8	4.0
Transportation	2.6	2.7	2.2	2.0	2.5	4.1	4.0
Student support	5.5	5.9	1.1	0.7	0.7	7.0	5.0
Instruction support	1.2	1.8	7.8	6.2	7.1	4.6	4.7
Other						0.2	0.2

Proposition 301

District-reported 2005 results

Teacher pay

- On average, each teacher earned an additional \$4,071 in salary.

Performance

- The District met most of its goals, which were based on school and individual performance.
- Teachers earned performance pay for each student scoring "meets" or "exceeds" on standardized testing.
- Other goals were linked to student attendance, teacher development, and parent-student satisfaction.

Menu

- Monies were used to increase teacher performance pay for accomplishing goals related to student achievement.