

Wellton Elementary School District

Yuma County

Efficiency peer groups 11 and T-11, Achievement peer group 19¹

Legislative district(s): 13

District size, location:

Very small, Rural

Students attending:

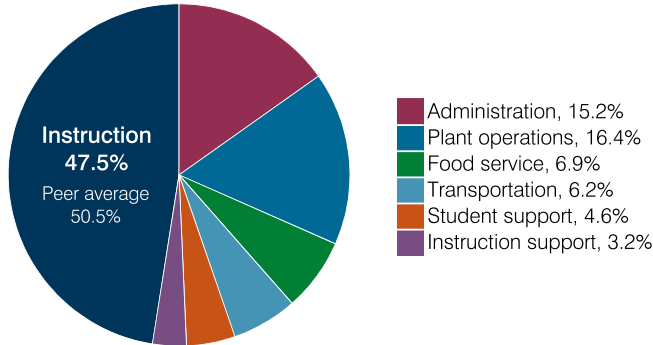
199

Number of schools:

1

OPERATIONAL EFFICIENCY

Spending by operational area



Efficiency measures relative to peer averages

Operational area	Measure	District	Peer average	State average
Administration	Cost per pupil	\$1,419	\$3,064	\$860
	Students per administrative position	52	33	66
Plant operations	Cost per square foot	\$5.01	\$7.31	\$6.34
	Square footage per student	305	371	156
Food service	Cost per meal	\$3.10	\$5.79	\$3.02
Transportation	Cost per mile	\$3.92	\$1.94	\$4.05
	Cost per rider	\$1,736	\$1,614	\$1,301

Per pupil spending

Spending by area	District		Peer average 2018	State average 2018
	2017	2018		
Instruction	\$ 5,044	\$ 4,429	\$ 8,493	\$ 4,480
Administration	1,160	1,419	3,064	860
Plant operations	1,528	1,531	2,439	988
Food service	586	644	932	425
Transportation	523	577	973	388
Student support	757	419	656	693
Instruction support	275	299	400	462
Total operational	9,873	9,318	16,957	8,296
Land and buildings	237	86	965	827
Equipment	485	458	562	409
Interest	8	1	25	228
Other	26	0	88	169
Total nonoperational	756	545	1,640	1,633
Total per pupil spending	\$ 10,629	\$ 9,863	\$ 18,597	\$ 9,929

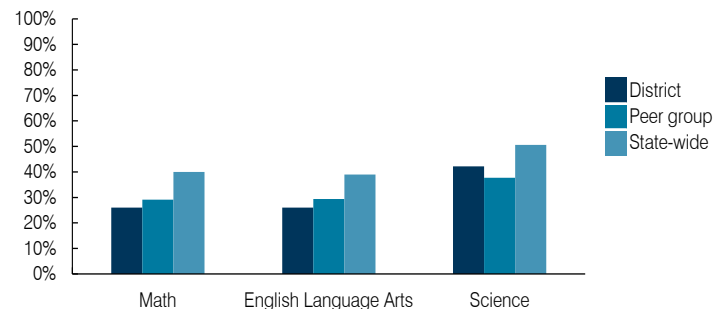
¹ See Appendix A for information such as districts included in each peer group and Appendix B for sources and methodology.

STUDENT ACHIEVEMENT, STUDENT AND TEACHER MEASURES, AND REVENUES

ADE-assigned school letter grades

Grade	Number of schools	Percentage of schools
A	0	0%
B	0	0%
C	1	100%
D	0	0%
F	0	0%

Students who passed State assessments



Student and teacher measures

Measure	District	Peer average	State average
Attendance rate	95%	93%	94%
Graduation rate (2017)	N/A	N/A	N/A
Poverty rate (2017)	32%	32%	19%
Special education population	15%	14%	12%
Students per teacher	18.1	15.6	18.4
Average teacher salary	\$43,123	\$49,189	\$48,951
Amount from Prop 301	\$3,879	\$4,810	\$6,411
Average years of teacher experience	14.1	11.6	11.4
Percentage of teachers in first 3 years	21%	11%	19%

Per pupil revenues

Revenues by source	District		Peer average 2018	State average 2018
	2017	2018		
Federal	\$ 2,757	\$ 1,726	\$ 3,021	\$ 1,317
State	5,421	4,350	4,788	4,011
Local	3,639	3,632	12,812	4,592
Total per pupil revenues	\$ 11,817	\$ 9,708	\$ 20,621	\$ 9,920

Select revenues from common sources

Source	District 2017	District 2018	Peer average 2018	State average 2018
Equalization formula funding	\$ 7,278	\$ 6,366	\$ 8,282	\$ 5,585
Grants	2,931	1,843	3,020	1,241
Donations and tax credits	5	16	125	90

Select revenues from less common sources

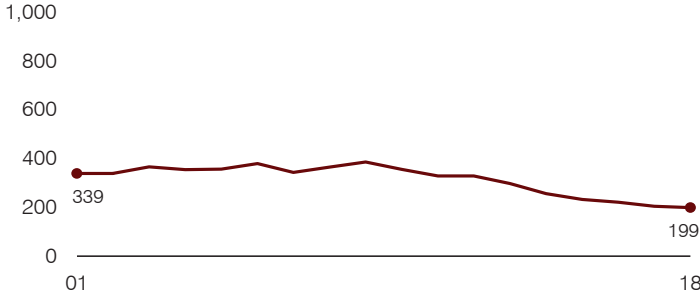
Source	District 2017	District 2018	Number of peers receiving
Desegregation	\$ 0	\$ 0	0 of 56
Small school adjustment	0	0	45 of 56
Federal impact aid	0	0	5 of 56
Voter-approved levy increases	0	0	5 of 56

Instructional spending percentage

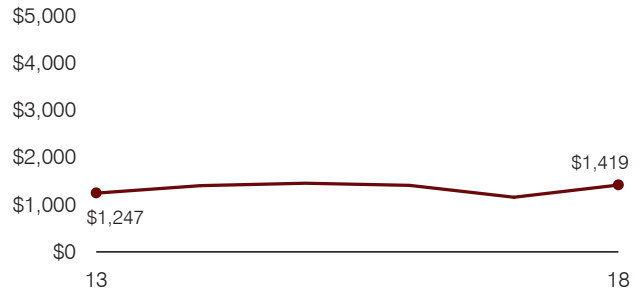
Year:	2001	2002	2003	2004	2005	2006	2007	2008	2009	2010	2011	2012	2013	2014	2015	2016	2017	2018
Percentage:	61.3	62.9	59.0	65.5	62.3	63.6	59.9	63.9	56.4	56.5	56.4	60.3	59.3	57.6	53.7	54.8	51.1	47.5

TRENDS AND FINANCIAL STRESS ASSESSMENT
Fiscal years as indicated

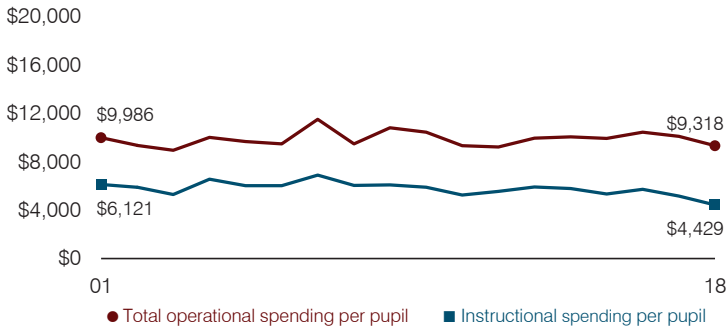
Students attending



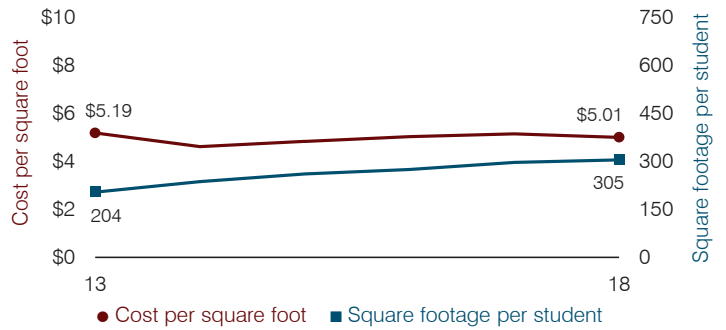
Administrative cost per pupil



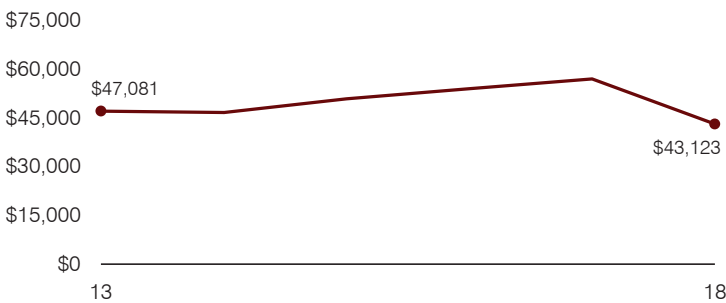
Total operational and instructional spending per pupil (inflation adjusted to 2018 dollars)



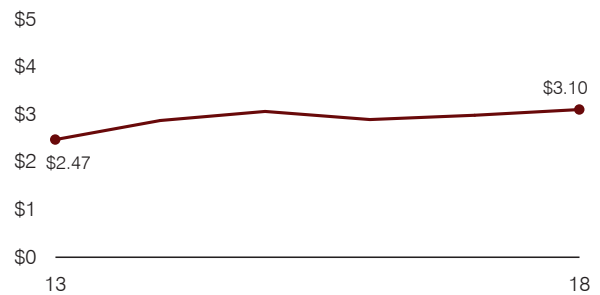
Plant cost per square foot and square footage per student



Average teacher salary



Food service cost per meal



Financial stress assessment

Overall financial stress level:	Low
Measure: 2016 through 2018	Assessment
Change in number of district students	Moderate decrease
Spending exceeded operating/capital budgets	No overspending
Spending increase election results	No election held
Operating reserve percentage, Trend	15.9%, Increasing
Years of capital reserve held	1 to 3 years
Current financial and internal control status	Compliant
	Low Moderate High

Transportation costs per mile and per rider

