

Wellton Elementary School District

Yuma County

Efficiency peer groups 10 and T-7, Achievement peer group 19

Legislative district(s): 13

District size, location:

Small, Rural

Students attending:

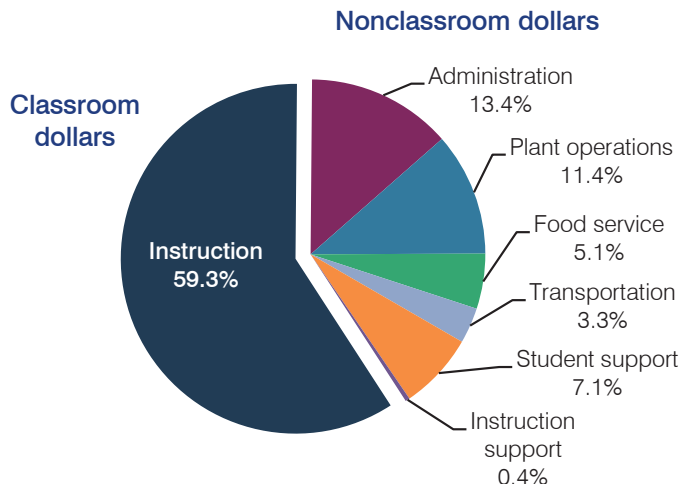
298

Number of schools:

1

OPERATIONAL EFFICIENCY

Spending by operational area



5-year spending trend

Total spending per pupil increased by 15 percent. Spending in the classroom varied year to year, decreasing overall from 63.9 to 59.3 percent. Spending on administration and student support increased significantly and spending on plant operations increased. Spending on instruction support decreased significantly and spending on food service decreased.

Cost measures relative to peer averages

| Operational area | Measure | District | Peer average | State average |
|------------------|----------------------------|----------|--------------|---------------|
| Administration | Cost per pupil | \$1,247 | \$1,130 | \$746 |
| | Students per administrator | 66 | 55 | 67 |
| Plant operations | Cost per square foot | \$5.19 | \$6.14 | \$6.03 |
| | Square footage per student | 204 | 157 | 153 |
| Food service | Cost per meal equivalent | \$2.47 | \$2.74 | \$2.58 |
| Transportation | Cost per mile | \$1.65 | \$3.06 | \$3.55 |
| | Cost per rider | \$479 | \$677 | \$1,015 |

Very low Low Comparable High Very high

Per pupil spending by operational area

| | District | | Peer average | State average | National average |
|------------------------------|----------------|----------------|----------------|----------------|------------------|
| | 2012 | 2013 | 2013 | 2013 | 2011 |
| Total | \$8,445 | \$9,278 | \$8,518 | \$7,496 | \$10,658 |
| Classroom dollars | 5,094 | 5,506 | 4,624 | 4,031 | 6,520 |
| Nonclassroom dollars: | 3,351 | 3,772 | 3,894 | 3,465 | 4,138 |
| Administration | 1,004 | 1,247 | 1,130 | 746 | 1,138 |
| Plant operations | 933 | 1,060 | 976 | 924 | 1,015 |
| Food service | 409 | 467 | 511 | 396 | 412 |
| Transportation | 291 | 301 | 537 | 369 | 452 |
| Student support | 598 | 662 | 499 | 582 | 593 |
| Instruction support | 116 | 35 | 241 | 448 | 528 |

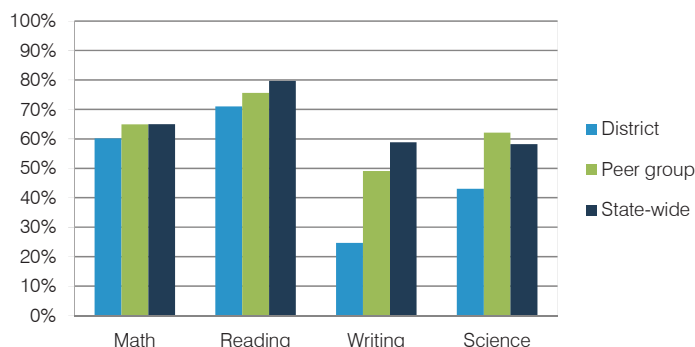
STUDENT ACHIEVEMENT, TEACHER MEASURES, AND FINANCIAL ASSESSMENT

ADE-reported district and school letter grades

District grade: **B**

| Grade | Number of schools | Percentage of schools |
|-----------|-------------------|-----------------------|
| A | 0 | 0% |
| B | 1 | 100% |
| C | 0 | 0% |
| D | 0 | 0% |
| F | 0 | 0% |
| Not rated | 0 | 0% |

Students who met state standards (AIMS)



Student and teacher measures

| Measure | District | Peer average | State average |
|---|----------|--------------|---------------|
| Attendance rate | 94% | 95% | 94% |
| Graduation rate (2012) | N/A | N/A | N/A |
| Poverty rate (2012) | 27% | 30% | 25% |
| Students per teacher | 14.2 | 13.9 | 18.3 |
| Average teacher salary | \$47,081 | \$41,809 | \$45,264 |
| Amount from Proposition 301 | \$3,308 | \$3,665 | \$3,784 |
| Average years of teacher experience | 13.3 | 12.3 | 10.9 |
| Percentage of teachers in first 3 years | 22% | 12% | 19% |

Financial stress assessment

Overall financial stress level: **Moderate**

| Measure: 2011 through 2013 | Assessment |
|---|-----------------------|
| Number of students attending district | Moderate decrease |
| Spending exceeded operating/capital budgets | Operating and capital |
| Spending increase election results | No election held |
| Operating reserve percentage (max. 4%), trend | 0.0%, Steady |
| Years of capital reserve held | 1 to 3 years |
| Current financial and internal control status | Compliant |

