

# Wellton Elementary School District

Yuma County  
Operational peer group: K  
Legislative districts: 24

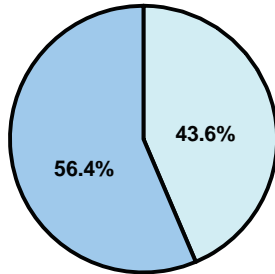
District size: Small  
Students attending: 386  
Number of schools: 1

## OPERATIONAL EFFICIENCY

### Average per-pupil spending

District  
State

Classroom  
\$5,270  
\$4,497



Nonclassroom  
\$4,079  
\$3,411

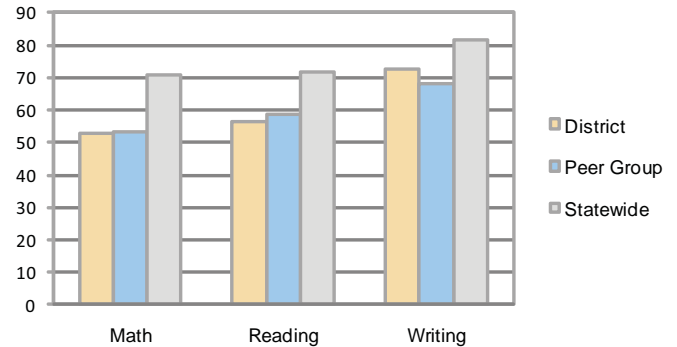
Total  
\$9,349  
\$7,908

### 5-year trend

Total spending per pupil increased by 25 percent. Spending in the classroom was very inconsistent year to year and decreased significantly overall from 65.5 to 56.4 percent. Spending on administration and student support increased significantly, while spending in other nonclassroom areas varied year to year.

## STUDENT ACHIEVEMENT AND TEACHER INFORMATION

### Percentage of students meeting state standards (AIMS)



### Adequate Yearly Progress (AYP) toward federal goals

The District's school did not meet AYP objectives for NCLB because some students did not demonstrate sufficient academic progress.

### Student and teacher information

Measure	District	Peer average	State average
Attendance rate	94%	94%	95%
Graduation rate (2008)	N/A	73%	75%
Poverty rate	30%	30%	19%
Student/teacher ratio	15.3	14.2	17.1
Average teacher salary	\$44,757	\$41,521	\$45,209
Average years' experience	13.0	10.8	8.3
Percent of teachers in first 3 years	5%	23%	16%

### District's cost measures relative to peer group

Operational Area	Measure	District	Peer Average	State Average
Administration	Cost per pupil	\$1,041	\$1,288	\$729
	Students per administrator	43	70	66
Plant Operations	Cost per square foot	\$6.02	\$6.94	\$6.40
	Square footage per student	165	149	144
Food Service	Cost per meal equivalent	\$2.74	\$3.05	\$2.53
Transportation	Cost per mile	\$1.74	\$2.22	\$3.36
	Miles per rider	165	268	271

Very Low    Low    Comparable    High    Very High

### Proposition 301

#### Teacher pay

On average, each teacher earned \$3,553 in additional salary.

#### Performance pay plan goals and results

Type of goal	Goal met?
Student achievement	▲
Dropout/ graduation rates	■
Student attendance	■
Parent/student satisfaction	■
Teacher attendance	■
Teacher professional development	■
Teacher evaluations	■
Tutoring	■
Other	■

■ = yes, □ = no, and ▲ = partially

### Per-pupil spending by function

	District		Peer	State	National
	2008	2009	2009	2009	2007
<b>Total</b>	<b>\$8,075</b>	<b>\$9,349</b>	<b>\$9,786</b>	<b>\$7,908</b>	<b>\$9,683</b>
<b>Classroom dollars</b>	<b>\$5,079</b>	<b>\$5,270</b>	<b>\$5,344</b>	<b>\$4,497</b>	<b>\$5,903</b>
<b>Nonclassroom dollars:</b>	<b>\$2,996</b>	<b>\$4,079</b>	<b>\$4,442</b>	<b>\$3,411</b>	<b>\$3,780</b>
Administration	942	1,041	1,288	729	1,050
Plant Operations	815	995	1,162	920	951
Food Service	546	546	582	382	369
Transportation	224	216	512	343	406
Student Support	216	972	586	594	512
Instruction Support	253	309	311	431	470
Other	0	0	1	12	22