

Classroom Dollars and Proposition 301 Results

Wellton Elementary School District

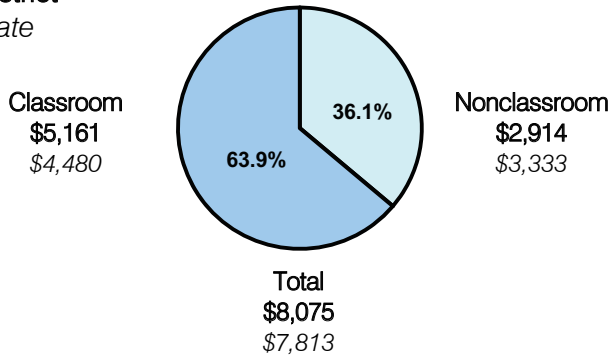
Yuma County

District size: Small
 Students attending: 365
 Number of schools: 1
 Number of certified teachers: 20

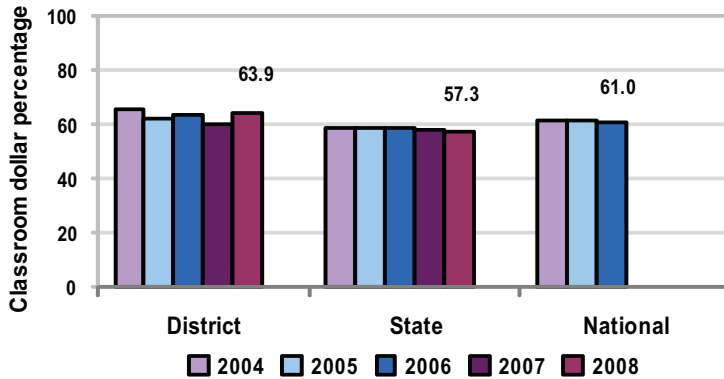
Classroom Dollars

Fiscal year 2008 averages per pupil

District
 State



5-year comparison



Expenditures by function

	Percentage					State 2008	National 2006
	District						
	2004	2005	2006	2007	2008		
Classroom dollars	65.5	62.3	63.6	59.9	63.9	57.3	61.0
Nonclassroom dollars:							
Administration	9.6	11.1	10.0	15.7	10.6	9.2	10.8
Plant operations	10.3	10.4	10.1	9.5	10.1	11.3	9.9
Food service	5.7	5.9	6.4	5.4	6.8	4.8	3.8
Transportation	2.0	2.5	2.4	2.1	2.8	4.4	4.2
Student support	0.7	0.7	2.3	2.8	2.7	7.4	5.2
Instruction support	6.2	7.1	5.2	4.6	3.1	5.4	4.9
Other						0.2	0.2

Comparative Information

	District			State 2008
	2006	2007	2008	
Student/teacher ratio	16.5	15.6	18.3	17.3
Average teacher salary	\$42,105	\$41,926	\$42,730	\$44,967
Average years' experience	8.8	9.5	10.5	8.1

Classroom dollar ranking: 7 of 230 districts.

Proposition 301

District-reported 2008 results

Teacher pay

- On average, each teacher earned an additional \$5,237 in salary.

Performance

- The District accomplished most of its goals, which were similar to the prior fiscal year's goals and were based on school and individual performance.
- Teachers were compensated on a per-student basis for students who scored "Meets" or "Exceeds" on standardized tests.
- Other goals were linked to teacher development and parent-student satisfaction.

Menu

- Monies were used to increase teacher compensation for accomplishing student achievement performance goals.
- Teachers were also compensated for having perfect attendance, participating in teacher development activities, and serving on committees.
- Monies were also used to pay 2 instructional aides to reduce class sizes.