

Wellton Elementary School District

Yuma County
Peer groups: Efficiency Group 11, Achievement Group 18
Legislative district(s): 24

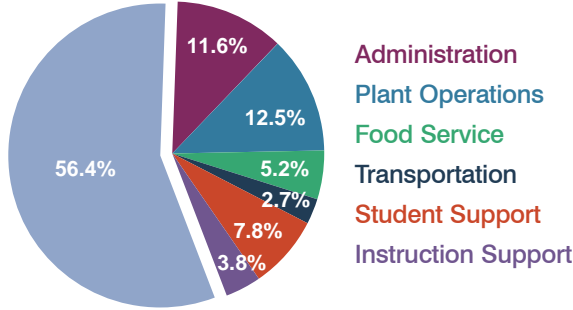
District size: Small
Students attending: 329
Number of schools: 1

OPERATIONAL EFFICIENCY

Spending by operational area

Classroom dollars

Nonclassroom dollars

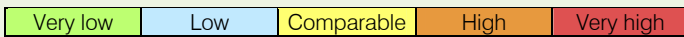


5-year trend

Total spending per pupil increased by 9 percent. Spending in the classroom varied year to year, decreasing significantly overall from 63.6 to 56.4 percent. Spending on administration, plant operations, and student support increased, and spending on food service and instruction support decreased. Spending on transportation remained fairly stable.

District's cost measures relative to peer group

Operational Area	Measure	District	Peer Average	State Average
Administration	Cost per pupil	\$963	\$1,132	\$728
	Students per administrator	73	54	66
Plant Operations	Cost per square foot	\$5.64	\$7.44	\$6.10
	Square footage per student	185	142	152
Food Service	Cost per meal equivalent	\$2.44	\$2.63	\$2.45
Transportation	Cost per mile	\$1.94	\$2.07	\$3.39
	Miles per rider	231	259	283



Per-pupil spending by operational area

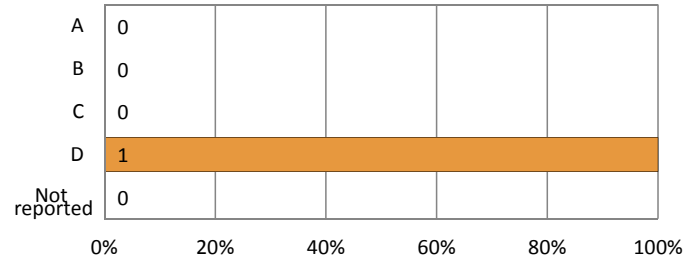
	District		Peer 2011	State 2011	National 2009
	2010	2011			
Total	\$9,115	\$8,311	\$8,149	\$7,485	\$10,591
Classroom dollars	\$5,146	\$4,684	\$4,324	\$4,098	\$6,456
Nonclassroom dollars:	\$3,969	\$3,627	\$3,825	\$3,387	\$4,135
Administration	1,013	963	1,132	728	1,147
Plant Operations	897	1,042	1,013	927	1,033
Food Service	532	430	496	375	404
Transportation	214	227	443	352	443
Student Support	1,034	645	486	571	573
Instruction Support	279	320	255	434	535

STUDENT ACHIEVEMENT AND TEACHER INFORMATION

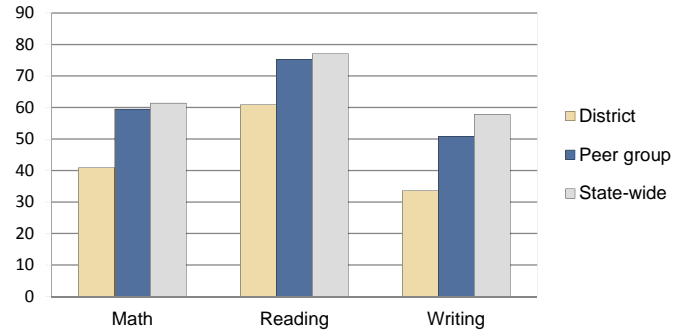
District and school letter grades

District grade: **D**

School grades (number and percentage):



Percentage of students meeting state standards (AIMS)



Student and teacher information

Measure	District	Peer Average	State Average
Attendance rate	100%	95%	95%
Graduation rate (2010)	N/A	N/A	N/A
Poverty rate (2010)	18%	20%	22%
Students per teacher	16.5	12.8	18.1
Average teacher salary	\$46,662	\$42,725	\$45,637
Average years of experience	13.3	10.9	10.9
Percent of teachers in first 3 years	11%	13%	16%

Proposition 301 pay, goals, and results

Average additional salary earned by teachers: \$1,713

Type of goal	Goal met?
Student achievement	■
Dropout/graduation rates	-
Student attendance	-
Parent/student satisfaction	-
Teacher attendance	□
Teacher professional development	■
Teacher evaluations	■
Tutoring	-
Other	■

■ = yes, □ = no, ▴ = partially, and - = no goal set