

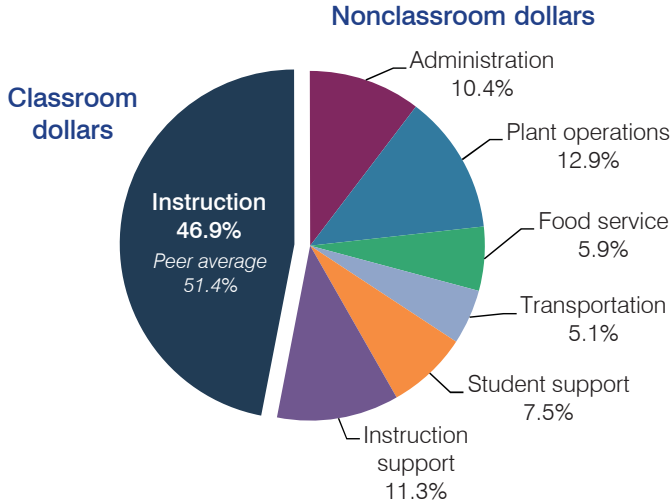
# Whiteriver Unified School District

Navajo County  
 Efficiency peer groups 4 and T-7, Achievement peer group 7  
 Legislative district(s): 7

District size, location: Medium-large, Town  
 Students attending: 2,159  
 Number of schools: 5

## OPERATIONAL EFFICIENCY

### Spending by operational area



### Efficiency measures relative to peer averages

Operational area	Measure	District	Peer average	State average
Administration	Cost per pupil	\$1,060	\$798	\$780
	Students per administrative position	70	65	67
Plant operations	Cost per square foot	\$4.52	\$5.52	\$6.09
	Square footage per student	290	191	153
Food service	Cost per meal equivalent	\$2.54	\$2.80	\$2.79
Transportation	Cost per mile	\$3.48	\$3.34	\$3.66
	Cost per rider	\$776	\$768	\$1,071

Very low (Green) | Low (Blue) | Comparable (Yellow) | High (Orange) | Very high (Red)

### Per pupil spending

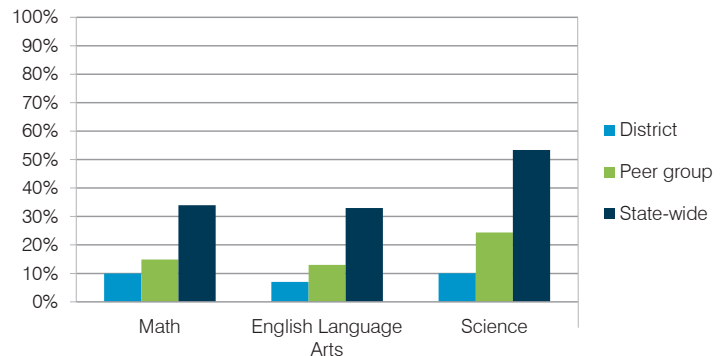
Spending by area	District		Peer average	State average
	2014	2015	2015	2015
Instruction	\$ 4,999	\$ 4,760	\$ 3,941	\$ 4,105
Administration	1,100	1,060	798	780
Plant operations	1,233	1,311	1,045	930
Food service	567	600	419	417
Transportation	468	519	411	371
Student support	1,093	765	597	613
Instruction support	1,384	1,142	479	442
<b>Total operational</b>	<b>\$ 10,844</b>	<b>\$ 10,157</b>	<b>\$ 7,690</b>	<b>\$ 7,658</b>
Land and buildings	\$ 3,169	\$ 3,626	\$ 382	\$ 641
Equipment	251	190	281	383
Interest	213	177	200	225
Other	208	197	59	150
<b>Total nonoperational</b>	<b>\$ 3,841</b>	<b>\$ 4,190</b>	<b>\$ 922</b>	<b>\$ 1,399</b>
<b>Total per pupil spending</b>	<b>\$ 14,685</b>	<b>\$ 14,347</b>	<b>\$ 8,612</b>	<b>\$ 9,057</b>

## STUDENT AND TEACHER MEASURES, FINANCIAL ASSESSMENT, AND REVENUE

### Student and teacher measures

Measure	District	Peer average	State average
Attendance rate	93%	92%	94%
Graduation rate (2014)	67%	72%	76%
Poverty rate (2014)	38%	41%	23%
Students per teacher	15.9	15.8	18.6
Average teacher salary	\$47,822	\$45,502	\$46,008
Average years of teacher experience	13.0	12.7	11.0
Percentage of teachers in first 3 years	18%	15%	20%

### Students who met state standards



### Financial stress assessment

Overall financial stress level: **Low**

Measure: 2013 through 2015	Assessment
Change in number of district students	Increase
Spending exceeded operating/capital budgets	No overspending
Spending increase election results	No election held
Operating reserve percentage (max. 4%), trend	3.9%, Steady
Years of capital reserve held	More than 3 years
Current financial and internal control status	Compliant

Low (Green) | Moderate (Yellow) | High (Red)

### Per pupil revenues

Revenues by source	District		Peer average	State average
	2014	2015	2015	2015
Federal	\$ 8,860	\$ 10,582	\$ 2,889	\$ 1,299
State	5,236	5,314	3,860	3,517
Local	814	832	2,930	4,248
<b>Total revenues per pupil</b>	<b>\$14,910</b>	<b>\$16,728</b>	<b>\$ 9,679</b>	<b>\$ 9,064</b>
<b>Select revenues from common sources</b>				
Equalization formula funding	\$ 5,392	\$ 5,193	\$ 5,185	\$ 5,303
Grants	3,221	3,736	1,573	1,167
Donations and tax credits	9	20	48	78
<b>Select revenues from less common sources</b>				
Desegregation	\$ 0	\$ 0	1 of 18	
Small school adjustment	0	0	0 of 18	
Federal impact aid	5,703	6,923	7 of 18	
Voter-approved levy increases	0	0	15 of 18	

# Whiteriver USD—page 2

## Classroom dollar percentage

Year:	2001	2002	2003	2004	2005	2006	2007	2008	2009	2010	2011	2012	2013	2014	2015
Percentage:	54.9	53.6	54.5	54.7	53.6	56.6	67.2	58.7	51.3	51.0	48.3	47.7	46.7	46.1	46.9

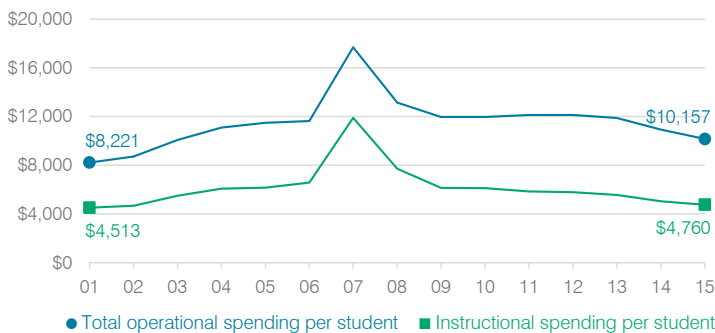
## OPERATIONAL TRENDS

Fiscal years as indicated

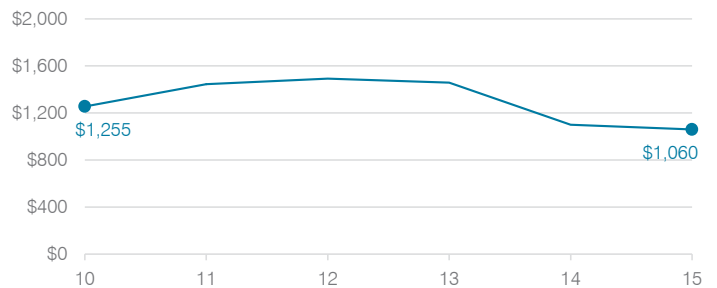
### 5-year spending trend (2010 through 2015)

Total operational spending per pupil, adjusted for inflation, decreased by 15 percent. The percentage of dollars spent in the classroom decreased overall from 51 to 46.9 percent. As a percentage of total operational spending, instruction support increased substantially, food service increased, and transportation increased slightly. Overall, student support decreased substantially and administration decreased.

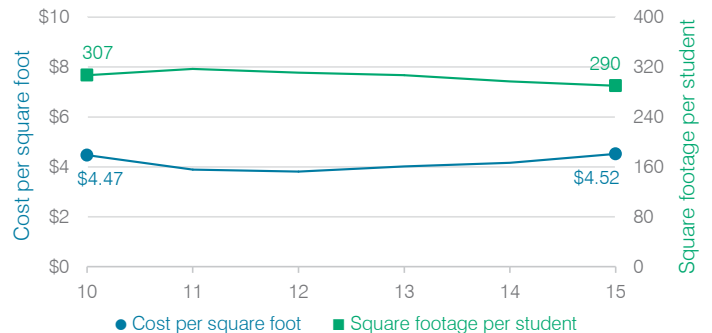
### Total operational and instructional spending per student (inflation adjusted to 2015 dollars)



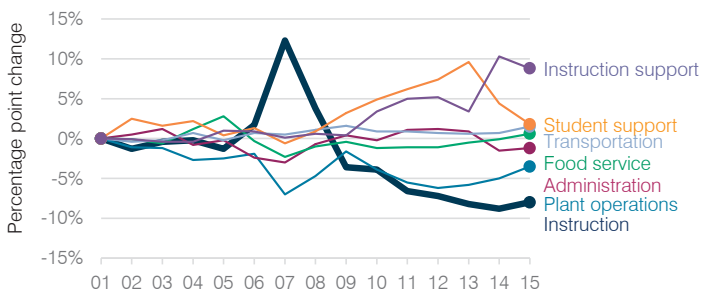
### Administrative cost per student



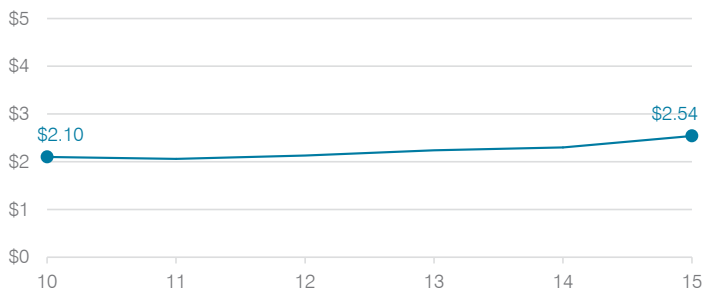
### Plant cost per square foot and square footage per student



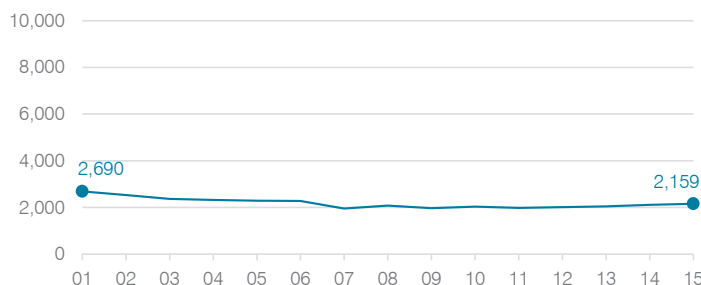
### Changes in operational spending percentages



### Food service cost per meal



### Students attending



### Transportation costs per mile and per rider

