

Wickenburg Unified School District

Maricopa County
Operational peer group: E
Legislative districts: 4

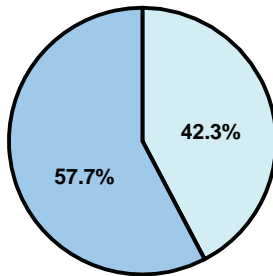
District size: Medium
Students attending: 1,572
Number of schools: 5

OPERATIONAL EFFICIENCY

Average per-pupil spending

District
State

Classroom
\$4,646
\$4,497



Nonclassroom
\$3,407
\$3,411

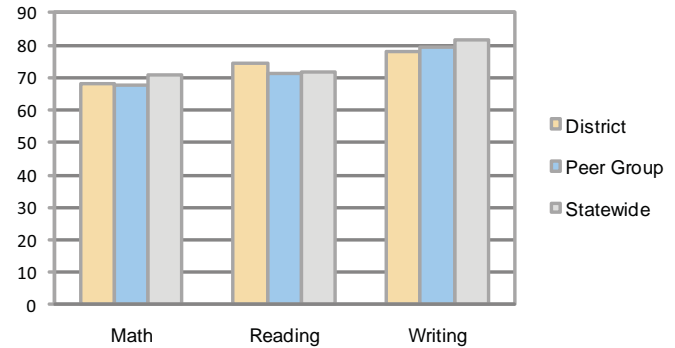
Total
\$8,053
\$7,908

5-year trend

Total spending per pupil increased by 22 percent. Spending in the classroom was very inconsistent year to year and decreased slightly overall from 58.1 to 57.7 percent. Spending on transportation decreased, while spending in other nonclassroom areas varied year to year.

STUDENT ACHIEVEMENT AND TEACHER INFORMATION

Percentage of students meeting state standards (AIMS)



Adequate Yearly Progress (AYP) toward federal goals

5 schools met all applicable AYP objectives for NCLB.

District's cost measures relative to peer group

Operational Area	Measure	District	Peer Average	State Average
Administration	Cost per pupil	\$912	\$1,148	\$729
	Students per administrator	65	51	66
Plant Operations	Cost per square foot	\$4.32	\$5.49	\$6.40
	Square footage per student	272	253	144
Food Service	Cost per meal equivalent	\$2.56	\$3.07	\$2.53
Transportation	Cost per mile	\$1.73	\$2.53	\$3.36
	Miles per rider	485	359	271

Very Low Low Comparable High Very High

Student and teacher information

Measure	District	Peer average	State average
Attendance rate	95%	95%	95%
Graduation rate (2008)	77%	70%	75%
Poverty rate	14%	15%	19%
Student/teacher ratio	15.3	16.8	17.1
Average teacher salary	\$44,869	\$42,842	\$45,209
Average years' experience	12.1	10.1	8.3
Percent of teachers in first 3 years	31%	24%	16%

Proposition 301

Teacher pay

On average, each teacher, librarian, counselor, teacher on special assignment, and a dean of students earned \$5,203 in additional salary.

Performance pay plan goals and results

Type of goal	Goal met?
Student achievement	■
Dropout/ graduation rates	■
Student attendance	■
Parent/student satisfaction	■
Teacher attendance	■
Teacher professional development	■
Teacher evaluations	■
Tutoring	■
Other	■

■ = yes, □ = no, and ▴ = partially

Per-pupil spending by function

	District		Peer	State	National
	2008	2009	2009	2009	2007
Total	\$8,177	\$8,053	\$9,562	\$7,908	\$9,683
Classroom dollars	\$4,491	\$4,646	\$4,925	\$4,497	\$5,903
Nonclassroom dollars:	\$3,686	\$3,407	\$4,637	\$3,411	\$3,780
Administration	1,103	912	1,148	729	1,050
Plant Operations	1,162	1,176	1,379	920	951
Food Service	444	373	444	382	369
Transportation	347	319	554	343	406
Student Support	363	301	749	594	512
Instruction Support	251	197	356	431	470
Other	16	129	7	12	22