

Classroom Dollars and Proposition 301 Results

Wickenburg Unified School District

Maricopa County

District size: Medium
 Students attending: 1,438
 Number of schools: 4
 Number of certified teachers: 98

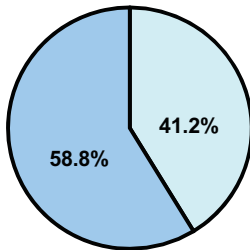
Classroom Dollars

Fiscal year 2008 averages per pupil

District

State

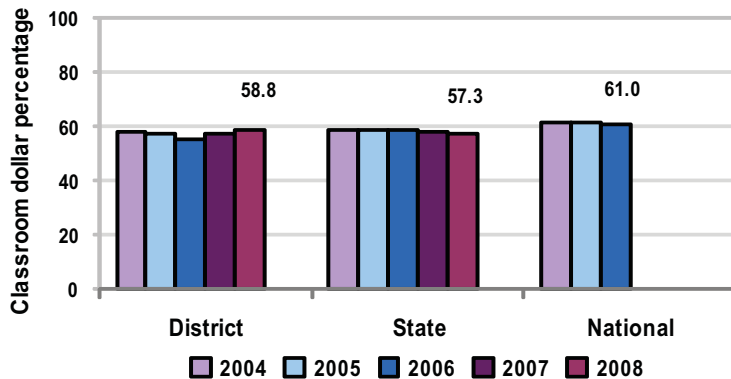
Classroom
 \$4,831
 \$4,480



Nonclassroom
 \$3,390
 \$3,333

Total
 \$8,221
 \$7,813

5-year comparison



Expenditures by function

| | Percentage | | | | | State 2008 | National 2006 |
|-----------------------|------------|------|------------------|------|------|---------------|------------------|
| | 2004 | 2005 | District 2006 | 2007 | 2008 | | |
| Classroom dollars | 58.1 | 57.3 | 55.0 | 57.2 | 58.8 | 57.3 | 61.0 |
| Nonclassroom dollars: | | | | | | | |
| Administration | 11.9 | 11.8 | 11.0 | 10.7 | 11.0 | 9.2 | 10.8 |
| Plant operations | 14.3 | 15.5 | 17.0 | 17.1 | 15.6 | 11.3 | 9.9 |
| Food service | 4.2 | 4.8 | 5.3 | 4.6 | 5.4 | 4.8 | 3.8 |
| Transportation | 5.1 | 5.1 | 4.9 | 4.3 | 4.1 | 4.4 | 4.2 |
| Student support | 3.4 | 3.1 | 3.6 | 3.6 | 3.0 | 7.4 | 5.2 |
| Instruction support | 3.0 | 2.4 | 3.2 | 2.5 | 2.1 | 5.4 | 4.9 |
| Other | | | | | | 0.2 | 0.2 |

Comparative Information

| | District | | | State |
|---------------------------|----------|----------|----------|----------|
| | 2006 | 2007 | 2008 | 2008 |
| Student/teacher ratio | 15.9 | 15.8 | 14.7 | 17.3 |
| Average teacher salary | \$37,331 | \$42,930 | \$45,404 | \$44,967 |
| Average years' experience | 9.7 | 8.7 | 9.3 | 8.1 |

Classroom dollar ranking: 53 of 230 districts.

Proposition 301

District-reported 2008 results

Teacher pay

- On average, each teacher and counselor earned an additional \$5,803 in salary.

Performance

- The District accomplished its goals, which were similar to the prior fiscal year's goals and were based on district and school performance.
- More than half of students met or exceeded the 50th-percentile on standardized tests in language, math, and reading.
- The student attendance rate was 95 percent.
- 92 percent of parents surveyed gave the District "A" or "B" ratings.
- The District also met goals linked to dropout and graduation rates.

Menu

- Monies were used solely to increase eligible employee compensation.