

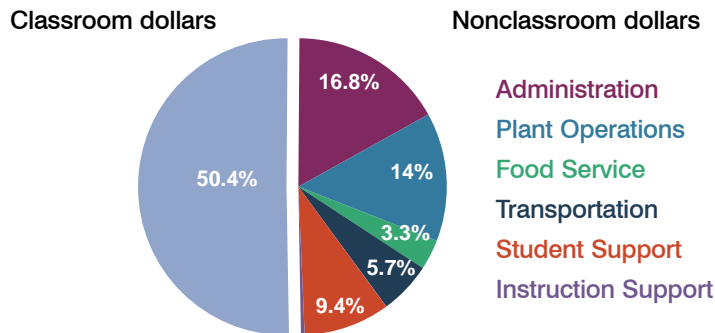
Williams Unified School District

Coconino County
Peer groups: Efficiency 5, Achievement 19
Legislative district(s): 1

District size: Medium
Students attending: 640
Number of schools: 2

OPERATIONAL EFFICIENCY

Spending by function



5-year trend

Total spending per pupil increased by 13 percent. Spending in the classroom decreased significantly from 56.9 to 50.4 percent. Spending on administration and student support increased significantly, spending on plant operations and transportation also increased, while spending on instruction support decreased.

District's cost measures relative to peer group

Operational Area	Measure	District	Peer Average	State Average
Administration	Cost per pupil	\$1,582	\$1,060	\$721
	Students per administrator	57	54	66
Plant Operations	Cost per square foot	\$5.88	\$5.34	\$6.25
	Square footage per student	224	243	146
Food Service	Cost per meal equivalent	\$2.23	\$2.83	\$2.41
Transportation	Cost per mile	\$2.41	\$2.55	\$3.35
	Miles per rider	294	360	282

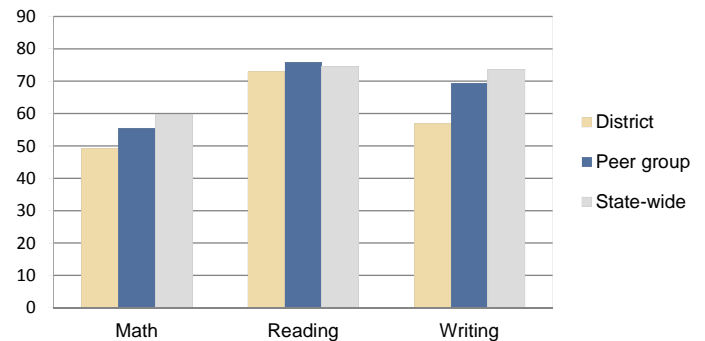
Very low Low Comparable High Very high

Per-pupil spending by function

	District		Peer 2010	State 2010	National 2008
	2009	2010			
Total	\$10,619	\$9,391	\$8,776	\$7,609	\$10,297
Classroom dollars	\$5,719	\$4,733	\$4,466	\$4,253	\$6,262
Nonclassroom dollars:	\$4,900	\$4,658	\$4,310	\$3,356	\$4,035
Administration	1,986	1,582	1,060	721	1,109
Plant Operations	1,082	1,317	1,260	914	1,003
Food Service	306	313	399	366	390
Transportation	544	522	510	342	438
Student Support	866	887	657	581	556
Instruction Support	116	37	424	432	539

STUDENT ACHIEVEMENT AND TEACHER INFORMATION

Percentage of students meeting state standards (AIMS)



Adequate Yearly Progress (AYP) toward federal goals

2 schools did not meet applicable AYP objectives for NCLB because they failed to meet 1 or more of the following objectives: attendance rate (2); graduation rate (1).

Student and teacher information

Measure	District	Peer Average	State Average
Attendance rate	88%	92%	94%
Graduation rate (2009)	76%	80%	76%
Poverty rate (2009)	21%	20%	21%
Student/teacher ratio	16.4	15.8	17.9
Average teacher salary	\$47,939	\$41,188	\$47,077
Average years' experience	14.4	11.6	10.6
Percent of teachers in first 3 years	9%	19%	20%

Proposition 301

Teacher and other staff pay

On average, each teacher earned \$6,221 in additional pay, and each counselor earned \$6,263.

Performance pay plan goals and results

Type of goal	Goal met?
Student achievement	▶
Dropout/graduation rates	▶
Student attendance	▶
Parent/student satisfaction	■
Teacher attendance	■
Teacher professional development	▶
Teacher evaluations	■
Tutoring	▶
Other	■

■ = yes, □ = no, ▶ = partially, and - = no goal set