

Williams Unified School District

Coconino County
Operational peer group: E
Legislative districts: 1

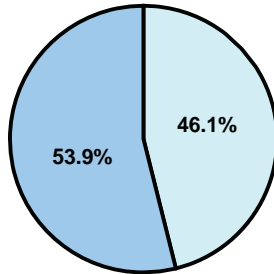
District size: Medium
Students attending: 656
Number of schools: 2

OPERATIONAL EFFICIENCY

Average per-pupil spending

District
State

Classroom
\$5,719
\$4,497



Nonclassroom
\$4,900
\$3,411

Total
\$10,619
\$7,908

5-year trend

Total spending per pupil increased by 36 percent. Spending in the classroom decreased significantly overall from 58.5 to 53.9 percent. Spending on administration increased significantly, while spending in other nonclassroom areas remained fairly stable.

District's cost measures relative to peer group

Operational Area	Measure	District	Peer Average	State Average
Administration	Cost per pupil	\$1,986	\$1,148	\$729
	Students per administrator	44	51	66
Plant Operations	Cost per square foot	\$4.95	\$5.49	\$6.40
	Square footage per student	218	253	144
Food Service	Cost per meal equivalent	\$2.74	\$3.07	\$2.53
Transportation	Cost per mile	\$2.39	\$2.53	\$3.36
	Miles per rider	320	359	271

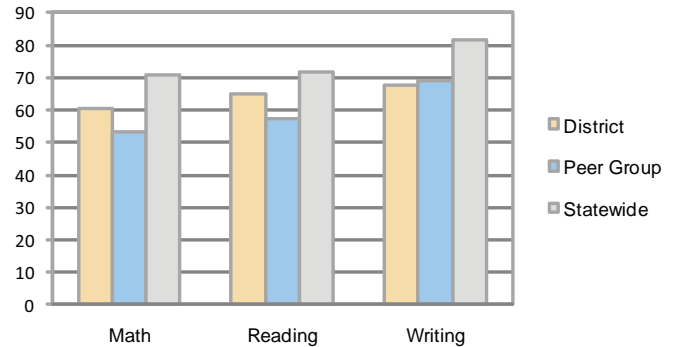
Very Low Low Comparable High Very High

Per-pupil spending by function

	District 2008	District 2009	Peer 2009	State 2009	National 2007
Total	\$9,478	\$10,619	\$9,562	\$7,908	\$9,683
Classroom dollars	\$5,354	\$5,719	\$4,925	\$4,497	\$5,903
Nonclassroom dollars:	\$4,124	\$4,900	\$4,637	\$3,411	\$3,780
Administration	1,519	1,986	1,148	729	1,050
Plant Operations	977	1,082	1,379	920	951
Food Service	315	306	444	382	369
Transportation	520	544	554	343	406
Student Support	685	866	749	594	512
Instruction Support	108	116	356	431	470
Other	0	0	7	12	22

STUDENT ACHIEVEMENT AND TEACHER INFORMATION

Percentage of students meeting state standards (AIMS)



Adequate Yearly Progress (AYP) toward federal goals

2 schools met all applicable AYP objectives for NCLB.

Student and teacher information

Measure	District	Peer average	State average
Attendance rate	91%	93%	95%
Graduation rate (2008)	83%	70%	75%
Poverty rate	21%	31%	19%
Student/teacher ratio	13.3	14.9	17.1
Average teacher salary	\$45,323	\$41,086	\$45,209
Average years' experience	11.0	11.1	8.3
Percent of teachers in first 3 years	19%	20%	16%

Proposition 301

Teacher pay

On average, each teacher and counselor earned between \$5,285 and \$5,319 in additional salary.

Performance pay plan goals and results

Type of goal	Goal met?
Student achievement	▲
Dropout/ graduation rates	■
Student attendance	▲
Parent/student satisfaction	■
Teacher attendance	■
Teacher professional development	▲
Teacher evaluations	■
Tutoring	■
Other	■

■ = yes, □ = no, and ▲ = partially