

# Window Rock Unified School District

Apache County

Efficiency peer groups 5 and T-7, Achievement peer group 7<sup>1</sup>

Legislative district(s): 7

District size, location:

Medium, Town

Students attending:

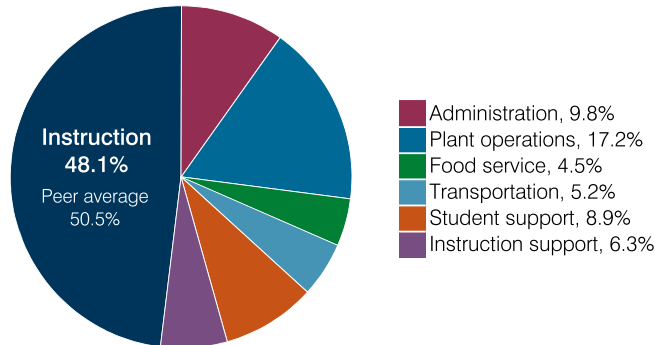
1,847

Number of schools:

5

## OPERATIONAL EFFICIENCY

### Spending by operational area



### Efficiency measures relative to peer averages

Operational area	Measure	District	Peer average	State average
Administration	Cost per pupil	\$1,504	\$1,221	\$860
	Students per administrative position	41	54	66
Plant operations	Cost per square foot	\$8.34	\$5.43	\$6.34
	Square footage per student	317	257	156
Food service	Cost per meal	\$3.15	\$3.66	\$3.02
Transportation	Cost per mile	\$5.26	\$3.35	\$4.05
	Cost per rider	\$1,502	\$1,057	\$1,301

Very low    Low    Comparable    High    Very high

### Per pupil spending

Spending by area	District		Peer average 2018	State average 2018
	2017	2018		
Instruction	\$ 7,665	\$ 7,401	\$ 4,824	\$ 4,480
Administration	1,562	1,504	1,221	860
Plant operations	2,446	2,645	1,365	988
Food service	707	701	437	425
Transportation	749	801	532	388
Student support	1,657	1,375	623	693
Instruction support	901	964	359	462
<b>Total operational</b>	<b>15,687</b>	<b>15,391</b>	<b>9,361</b>	<b>8,296</b>
Land and buildings	818	76	799	827
Equipment	532	302	433	409
Interest	244	355	248	228
Other	27	25	71	169
<b>Total nonoperational</b>	<b>1,621</b>	<b>758</b>	<b>1,551</b>	<b>1,633</b>
<b>Total per pupil spending</b>	<b>\$ 17,308</b>	<b>\$ 16,149</b>	<b>\$ 10,912</b>	<b>\$ 9,929</b>

<sup>1</sup> See Appendix A for information such as districts included in each peer group and Appendix B for sources and methodology.

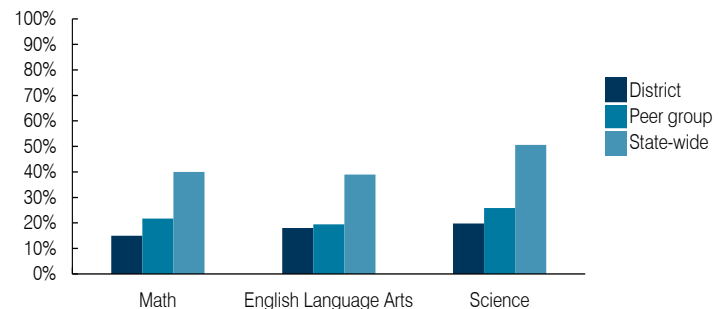
## STUDENT ACHIEVEMENT, STUDENT AND TEACHER MEASURES, AND REVENUES

### ADE-assigned school letter grades

Grade	Number of schools <sup>2</sup>	Percentage of schools
A	0	0%
B	0	0%
C	1	25%
D	2	50%
F	1	25%

<sup>2</sup> Excludes schools for which letter grades were not published by ADE. See Appendix B for more information.

### Students who passed State assessments



### Student and teacher measures

Measure	District	Peer average	State average
Attendance rate	91%	91%	94%
Graduation rate (2017)	69%	76%	78%
Poverty rate (2017)	37%	41%	19%
Special education population	11%	12%	12%
Students per teacher	14.0	15.8	18.4
Average teacher salary	\$57,598	\$48,537	\$48,951
Amount from Prop 301	\$4,569	\$5,191	\$6,411
Average years of teacher experience	16.4	12.5	11.4
Percentage of teachers in first 3 years	3%	18%	19%

### Per pupil revenues

Revenues by source	District		Peer average 2018	State average 2018
	2017	2018		
Federal	\$ 10,658	\$ 10,447	\$ 3,917	\$ 1,317
State	5,740	5,896	4,283	4,011
Local	928	1,164	4,207	4,592
<b>Total per pupil revenues</b>	<b>\$ 17,326</b>	<b>\$ 17,507</b>	<b>\$ 12,407</b>	<b>\$ 9,920</b>

### Select revenues from common sources

Source	District	Peer average	State average
Equalization formula funding	\$ 5,730	\$ 5,833	\$ 5,992
Grants	2,507	3,608	1,703
Donations and tax credits	12	4	147

### Select revenues from less common sources

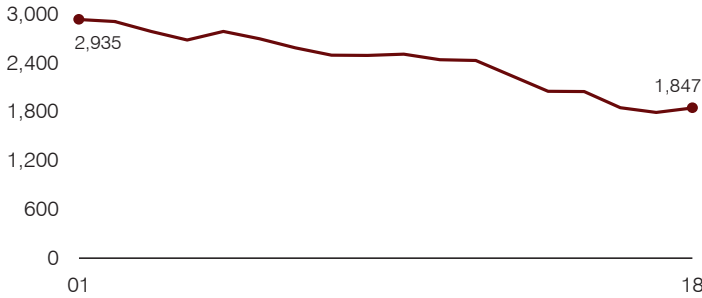
Source	District	Peer average	Number of peers receiving
Desegregation	\$ 0	\$ 0	0 of 31
Small school adjustment	0	0	0 of 31
Federal impact aid	8,151	6,889	16 of 31
Voter-approved levy increases	162	201	21 of 31

**Instructional spending percentage**

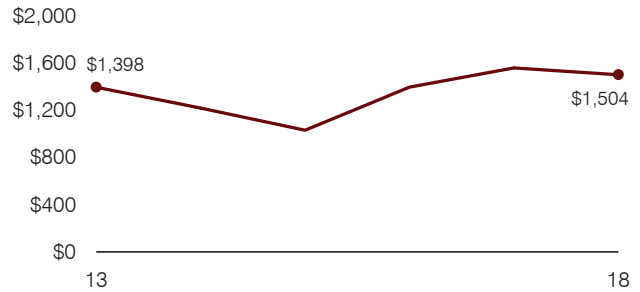
Year: 2001 2002 2003 2004 2005 2006 2007 2008 2009 2010 2011 2012 2013 2014 2015 2016 2017 2018  
 Percentage: 54.1 57.3 57.5 56.1 52.0 52.0 52.4 50.4 50.1 49.6 47.4 48.0 47.1 46.1 45.6 44.7 48.9 48.1

**TRENDS AND FINANCIAL STRESS ASSESSMENT**  
 Fiscal years as indicated

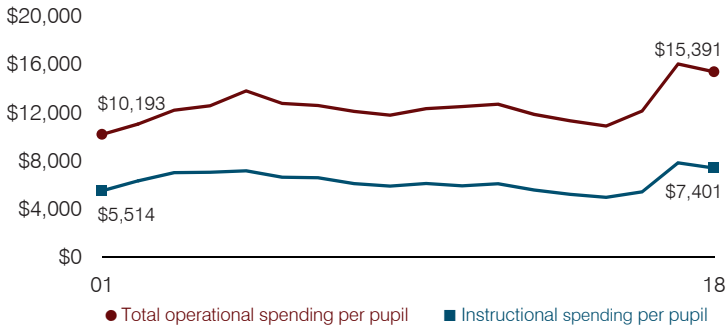
**Students attending**



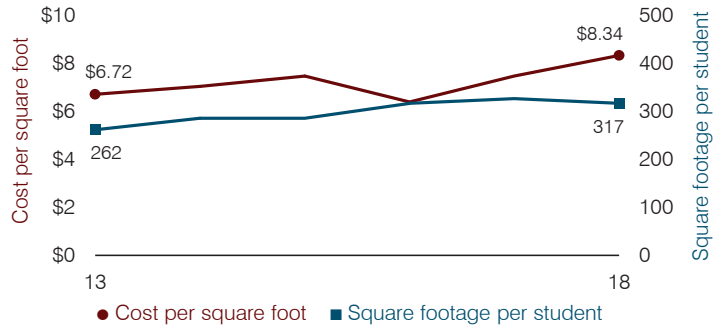
**Administrative cost per pupil**



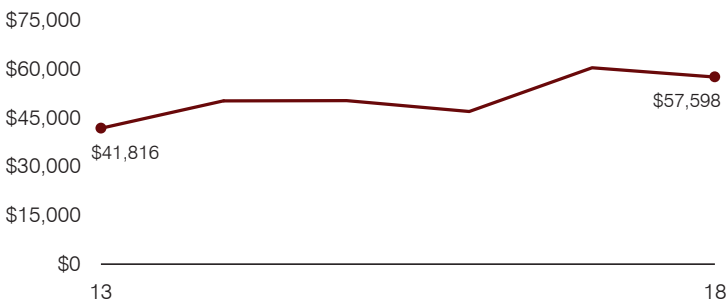
**Total operational and instructional spending per pupil (inflation adjusted to 2018 dollars)**



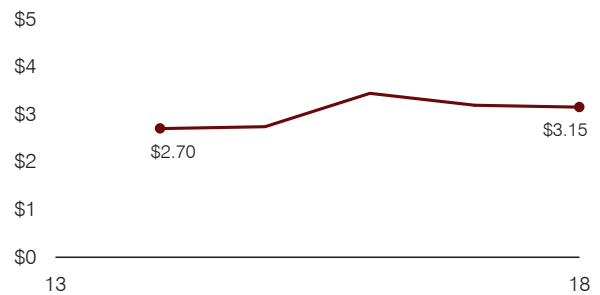
**Plant cost per square foot and square footage per student**



**Average teacher salary**



**Food service cost per meal**



**Financial stress assessment**

Overall financial stress level: **Low**

Measure: 2016 through 2018	Assessment
Change in number of district students	Steady
Spending exceeded operating/capital budgets	No overspending
Spending increase election results	No election held
Operating reserve percentage, Trend	6.4%, Varying
Years of capital reserve held	Impact Aid Fund reserve
Current financial and internal control status	Marginally compliant

Low
Moderate
High

**Transportation costs per mile and per rider**

