

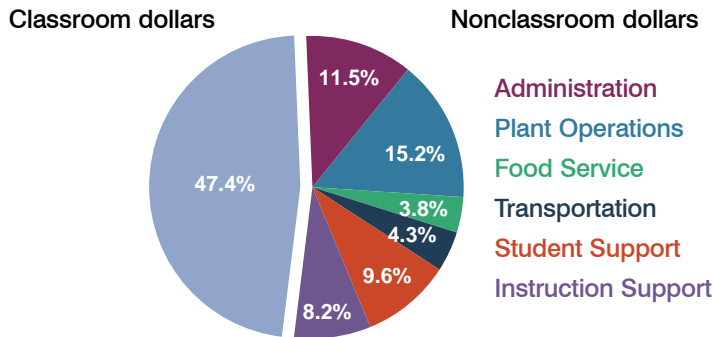
Window Rock Unified School District

Apache County
Peer groups: Efficiency Group 4, Achievement Group 8
Legislative district(s): 2

District size: Medium-Large
Students attending: 2,440
Number of schools: 6

OPERATIONAL EFFICIENCY

Spending by operational area



5-year trend

Total spending per pupil increased by 9 percent. Spending in the classroom decreased significantly from 52 to 47.4 percent. Overall, spending on administration decreased, and spending on plant operations, student support, and instruction support increased. Spending on other nonclassroom areas remained stable.

District's cost measures relative to peer group

Operational Area	Measure	District	Peer Average	State Average
Administration	Cost per pupil	\$1,281	\$736	\$728
	Students per administrator	48	65	66
Plant Operations	Cost per square foot	\$7.35	\$5.52	\$6.10
	Square footage per student	231	169	152
Food Service	Cost per meal equivalent	\$2.90	\$2.60	\$2.45
Transportation	Cost per mile	\$4.66	\$2.93	\$3.39
	Miles per rider	180	324	283

Very low Low Comparable High Very high

Per-pupil spending by operational area

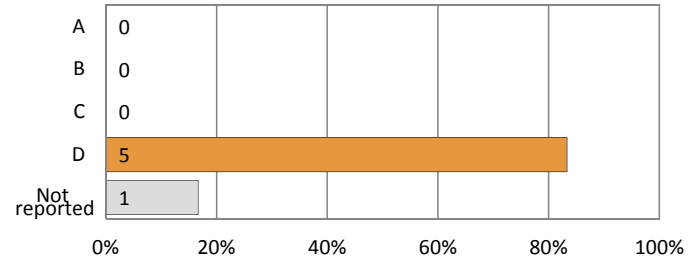
	District		Peer 2011	State 2011	National 2009
	2010	2011			
Total	\$10,771	\$11,142	\$7,026	\$7,485	\$10,591
Classroom dollars	\$5,345	\$5,278	\$3,783	\$4,098	\$6,456
Nonclassroom dollars:	\$5,426	\$5,864	\$3,243	\$3,387	\$4,135
Administration	1,285	1,281	736	728	1,147
Plant Operations	1,520	1,699	917	927	1,033
Food Service	420	430	351	375	404
Transportation	453	475	360	352	443
Student Support	848	1,067	528	571	573
Instruction Support	900	912	351	434	535

STUDENT ACHIEVEMENT AND TEACHER INFORMATION

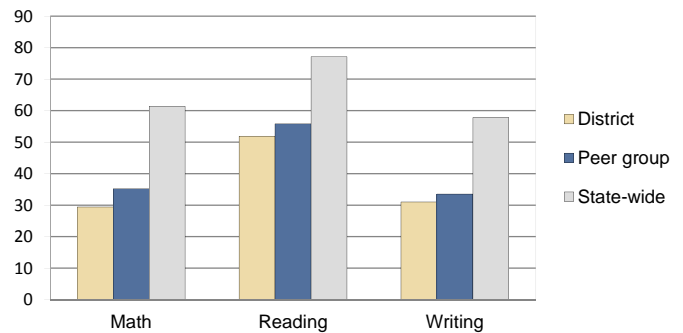
District and school letter grades

District grade: **D**

School grades (number and percentage):



Percentage of students meeting state standards (AIMS)



Student and teacher information

Measure	District	Peer Average	State Average
Attendance rate	91%	92%	95%
Graduation rate (2010)	64%	68%	78%
Poverty rate (2010)	38%	40%	22%
Students per teacher	16.2	15.5	18.1
Average teacher salary	\$51,495	\$42,449	\$45,637
Average years of experience	12.9	12.2	10.9
Percent of teachers in first 3 years	17%	16%	16%

Proposition 301 pay, goals, and results

Average additional salary earned by teachers: \$3,274

Type of goal	Goal met?
Student achievement	▀
Dropout/graduation rates	-
Student attendance	■
Parent/student satisfaction	-
Teacher attendance	-
Teacher professional development	-
Teacher evaluations	-
Tutoring	-
Other	-

■ = yes, □ = no, ▀ = partially, and - = no goal set