

# Winslow Unified School District

Navajo County  
Operational peer group: D  
Legislative districts: 5

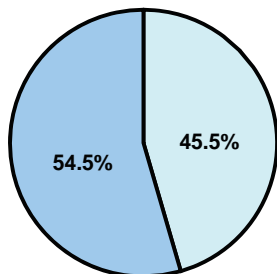
District size: Medium-Large  
Students attending: 2,271  
Number of schools: 5

## OPERATIONAL EFFICIENCY

### Average per-pupil spending

District  
State

Classroom  
**\$4,209**  
\$4,497



Nonclassroom  
**\$3,511**  
\$3,411

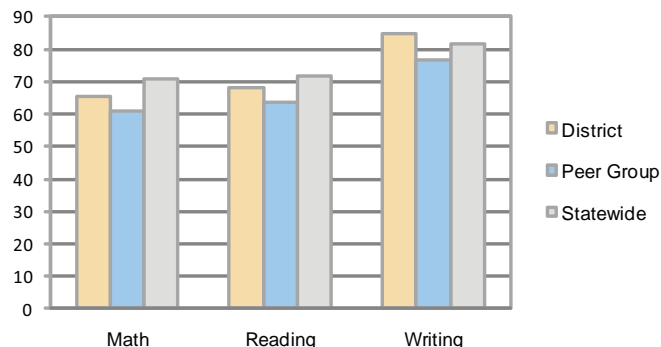
Total  
**\$7,720**  
\$7,908

### 5-year trend

Total spending per pupil increased 28 percent. Spending in the classroom varied year to year and decreased significantly overall from 57.3 to 54.5 percent. Spending on administration, food service, and instruction support increased, while spending in other areas remained fairly stable.

## STUDENT ACHIEVEMENT AND TEACHER INFORMATION

### Percentage of students meeting state standards (AIMS)



### Adequate Yearly Progress (AYP) toward federal goals

5 schools met all applicable AYP objectives for NCLB.

### District's cost measures relative to peer group

Operational Area	Measure	District	Peer Average	State Average
Administration	Cost per pupil	\$782	\$775	\$729
	Students per administrator	61	61	66
Plant Operations	Cost per square foot	\$5.80	\$6.13	\$6.40
	Square footage per student	179	168	144
Food Service	Cost per meal equivalent	\$2.98	\$2.64	\$2.53
Transportation	Cost per mile	\$2.44	\$2.96	\$3.36
	Miles per rider	150	307	271

Very Low    Low    Comparable    High    Very High

### Student and teacher information

Measure	District	Peer average	State average
Attendance rate	94%	94%	95%
Graduation rate (2008)	71%	75%	75%
Poverty rate	23%	29%	19%
Student/teacher ratio	15.9	17.6	17.1
Average teacher salary	\$40,817	\$44,586	\$45,209
Average years' experience	11.4	10.4	8.3
Percent of teachers in first 3 years	21%	23%	16%

### Proposition 301

#### Teacher pay

On average, each teacher, librarian, speech pathologist, and counselor earned \$4,277 in additional salary.

### Performance pay plan goals and results

Type of goal	Goal met?
Student achievement	■
Dropout/ graduation rates	
Student attendance	
Parent/student satisfaction	
Teacher attendance	■
Teacher professional development	■
Teacher evaluations	
Tutoring	
Other	■

■ = yes, □ = no, and ▮ = partially

### Per-pupil spending by function

	District		Peer	State	National
	2008	2009	2009	2009	2007
<b>Total</b>	<b>\$7,571</b>	<b>\$7,720</b>	<b>\$7,896</b>	<b>\$7,908</b>	<b>\$9,683</b>
<b>Classroom dollars</b>	<b>\$4,075</b>	<b>\$4,209</b>	<b>\$4,312</b>	<b>\$4,497</b>	<b>\$5,903</b>
<b>Nonclassroom dollars:</b>	<b>\$3,496</b>	<b>\$3,511</b>	<b>\$3,584</b>	<b>\$3,411</b>	<b>\$3,780</b>
Administration	800	782	775	729	1,050
Plant Operations	1,062	1,036	1,032	920	951
Food Service	302	313	365	382	369
Transportation	290	283	397	343	406
Student Support	242	294	629	594	512
Instruction Support	800	803	380	431	470
Other	0	0	6	12	22