

Classroom Dollars and Proposition 301 Results

Winslow Unified School District

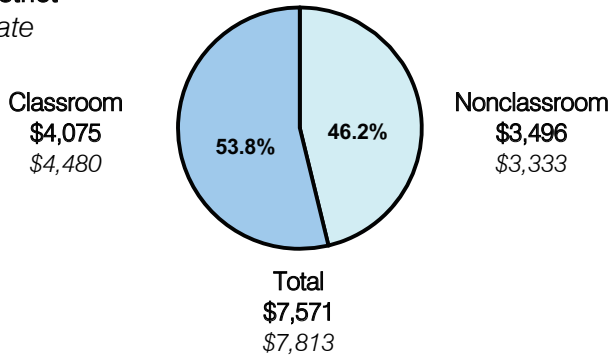
Navajo County

District size: Medium
 Students attending: 2,306
 Number of schools: 5
 Number of certified teachers: 139

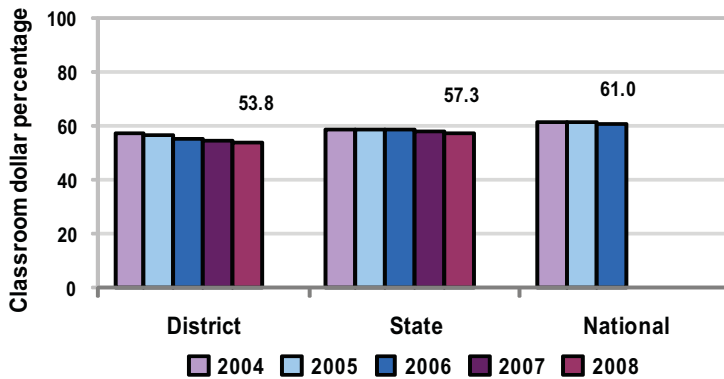
Classroom Dollars

Fiscal year 2008 averages per pupil

District
 State



5-year comparison



Expenditures by function

	Percentage					State 2008	National 2006
	District						
	2004	2005	2006	2007	2008		
Classroom dollars	57.3	56.8	55.5	54.3	53.8	57.3	61.0
Nonclassroom dollars:							
Administration	9.3	9.6	9.7	10.5	10.6	9.2	10.8
Plant operations	13.4	13.0	13.8	14.7	14.0	11.3	9.9
Food service	3.0	3.0	3.5	3.5	4.0	4.8	3.8
Transportation	2.8	2.9	3.2	3.5	3.8	4.4	4.2
Student support	5.0	4.3	3.8	3.9	3.2	7.4	5.2
Instruction support	9.2	10.4	10.5	9.6	10.6	5.4	4.9
Other						0.2	0.2

Comparative Information

	District			State
	2006	2007	2008	2008
Student/teacher ratio	18.0	17.7	16.6	17.3
Average teacher salary	\$44,161	\$44,965	\$43,171	\$44,967
Average years' experience	8.9	8.9	8.7	8.1

Classroom dollar ranking: 137 of 230 districts.

Proposition 301

District-reported 2008 results

Teacher pay

- On average, each teacher, librarian, speech pathologist, and counselor earned an additional \$5,421 in salary, and each instructional aide earned an additional \$500.

Performance

- The District accomplished its goals, which were based on district and individual performance.
- Student achievement increased based on district pre- and post-test scores.
- Teachers continued to implement the use of Galileo assessments to measure growth in writing and math.
- Teachers included state standards performance objectives within daily lesson plans.
- Other goals were linked to teacher development and parent involvement.
- Performance pay monies were also used to pay for teacher salaries associated with the District's dropout prevention program, AIMS intervention program, and class size reduction even though these should have been paid for with menu options monies.

Menu

- Monies were used solely to increase eligible employee compensation.