

# Yarnell Elementary School District

Yavapai County  
Operational peer group: L  
Legislative districts: 4

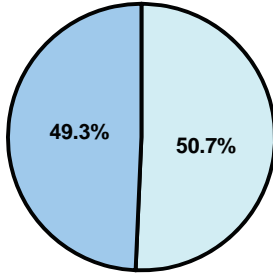
District size: Very Small  
Students attending: 48  
Number of schools: 1

## OPERATIONAL EFFICIENCY

### Average per-pupil spending

District  
State

Classroom  
**\$9,053**  
\$4,497



Nonclassroom  
**\$9,297**  
\$3,411

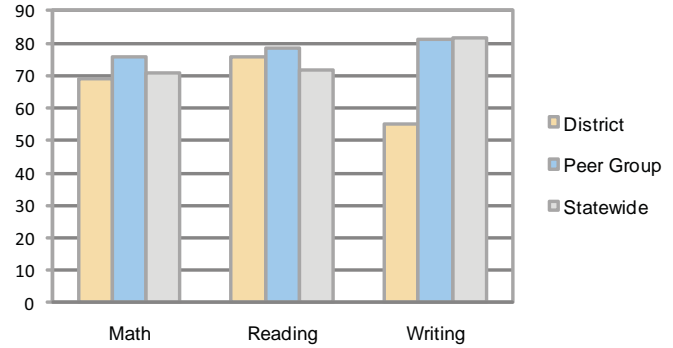
Total  
**\$18,350**  
\$7,908

### 5-year trend

Although student enrollment declined by only 6 percent, total spending per pupil increased by 65 percent. Spending in the classroom was very inconsistent year to year and decreased significantly overall from 54.2 to 49.3 percent. Spending on plant operations and student support increased significantly, while spending in other areas was very inconsistent year to year.

## STUDENT ACHIEVEMENT AND TEACHER INFORMATION

### Percentage of students meeting state standards (AIMS)



### Adequate Yearly Progress (AYP) toward federal goals

The District's school met all applicable AYP objectives for NCLB.

### Student and teacher information

Measure	District	Peer average	State average
Attendance rate	96%	95%	95%
Graduation rate (2008)	N/A	55%	75%
Poverty rate	17%	12%	19%
Student/teacher ratio	8.6	10.7	17.1
Average teacher salary	\$43,834	\$45,399	\$45,209
Average years' experience	10.9	10.9	8.3
Percent of teachers in first 3 years	17%	18%	16%

### District's cost measures relative to peer group

Operational Area	Measure	District	Peer Average	State Average
Administration	Cost per pupil	\$2,907	\$2,656	\$729
	Students per administrator	27	32	66
Plant Operations	Cost per square foot	\$5.56	\$7.53	\$6.40
	Square footage per student	358	318	144
Food Service	Cost per meal equivalent	\$5.99	\$5.10	\$2.53
Transportation	Cost per mile	\$1.31	\$1.79	\$3.36
	Miles per rider	564	710	271

Very Low Low Comparable High Very High

### Per-pupil spending by function

	District		Peer	State	National
	2008	2009	2009	2009	2007
<b>Total</b>	<b>\$15,791</b>	<b>\$18,350</b>	<b>\$16,311</b>	<b>\$7,908</b>	<b>\$9,683</b>
<b>Classroom dollars</b>	<b>\$7,893</b>	<b>\$9,053</b>	<b>\$8,757</b>	<b>\$4,497</b>	<b>\$5,903</b>
<b>Nonclassroom dollars:</b>	<b>\$7,898</b>	<b>\$9,297</b>	<b>\$7,554</b>	<b>\$3,411</b>	<b>\$3,780</b>
Administration	2,739	2,907	2,656	729	1,050
Plant Operations	1,711	1,988	2,297	920	951
Food Service	1,407	1,388	859	382	369
Transportation	881	898	930	343	406
Student Support	1,109	2,013	474	594	512
Instruction Support	51	103	338	431	470
Other	0	0	0	12	22

### Proposition 301

#### Teacher pay

On average, each teacher earned \$1,989 in additional salary.

#### Performance pay plan goals and results

Type of goal	Goal met?
Student achievement	▲
Dropout/ graduation rates	
Student attendance	
Parent/student satisfaction	
Teacher attendance	
Teacher professional development	
Teacher evaluations	
Tutoring	
Other	▲

■ = yes, □ = no, and ▲ = partially