

# Classroom Dollars and Proposition 301 Results

## Yarnell Elementary School District

Yavapai County

District size: Very Small  
 Students attending: 58  
 Number of schools: 1  
 Number of certified teachers: 6

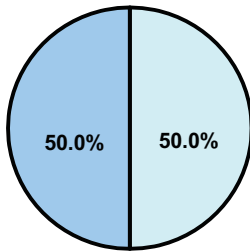
### Classroom Dollars

Fiscal year 2008 averages per pupil

District

State

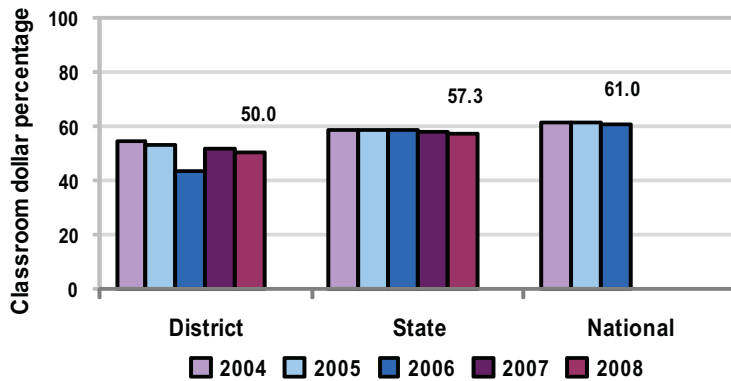
Classroom  
\$7,893  
\$4,480



Nonclassroom  
\$7,898  
\$3,333

Total  
\$15,791  
\$7,813

5-year comparison



### Expenditures by function

	District					State 2008	National 2006
	2004	2005	2006	2007	2008		
Classroom dollars	54.2	53.2	43.7	51.6	50.0	57.3	61.0
Nonclassroom dollars:							
Administration	22.5	19.4	23.6	15.8	17.3	9.2	10.8
Plant operations	6.3	9.2	11.8	10.8	10.8	11.3	9.9
Food service	7.2	8.8	8.8	10.1	9.0	4.8	3.8
Transportation	5.8	5.1	6.1	4.9	5.6	4.4	4.2
Student support	3.7	3.8	5.3	6.2	7.0	7.4	5.2
Instruction support	0.3	0.5	0.7	0.6	0.3	5.4	4.9
Other						0.2	0.2

### Comparative Information

	District			State 2008
	2006	2007	2008	
Student/teacher ratio	9.0	10.8	9.5	17.3
Average teacher salary	\$26,975	\$38,259	\$38,942	\$44,967
Average years' experience	6.3	6.9	7.8	8.1

Classroom dollar ranking: 180 of 230 districts.

### Proposition 301

#### District-reported 2008 results

##### Teacher pay

- On average, each teacher earned an additional \$2,592 in salary.

##### Performance

- The District accomplished its goals, which were based on district and individual performance.
- The school earned a "Performing" label from ADE for AZ LEARNS.
- Student achievement goals required standardized test scores to improve.
- Other goals were linked to parent involvement, professional development, and tutoring.

##### Menu

- Monies were used to hire an instructional aide for AIMS intervention.