

Classroom Dollars and Proposition 301 Results

Yarnell Elementary School District

Yavapai County

District size: Very Small
 Students attending: 57
 Number of schools: 1
 Number of certified teachers: 5

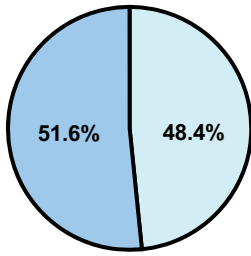
Classroom Dollars

Fiscal year 2007 averages per pupil

District

State

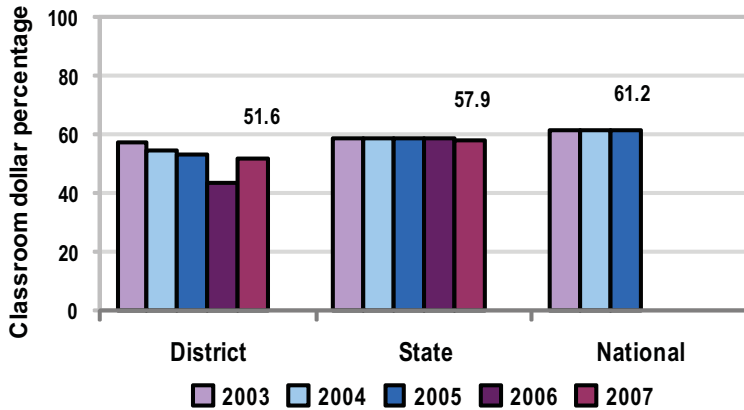
Classroom
\$6,925
\$4,277



Nonclassroom
\$6,504
\$3,105

Total
\$13,429
\$7,382

5-year comparison



Expenditures by function

	District					State 2007	National 2005
	2003	2004	2005	2006	2007		
Classroom dollars	57.1	54.2	53.2	43.7	51.6	57.9	61.2
Nonclassroom dollars:							
Administration	21.7	22.5	19.4	23.6	15.8	9.5	11.0
Plant operations	5.1	6.3	9.2	11.8	10.8	11.3	9.6
Food service	6.6	7.2	8.8	8.8	10.1	4.7	3.9
Transportation	5.5	5.8	5.1	6.1	4.9	4.3	4.1
Student support	3.7	3.7	3.8	5.3	6.2	7.3	5.2
Instruction support	0.3	0.3	0.5	0.7	0.6	4.8	4.8
Other						0.2	0.2

Comparative Information

	District			State 2007
	2005	2006	2007	
Student/teacher ratio	8.2	9.0	10.8	17.4
Average teacher salary	\$33,400	\$26,975	\$38,259	\$43,833
Average years' experience	6.3	6.3	6.9	8.1

Classroom dollar ranking: 164 of 229 districts.

Proposition 301

District-reported 2007 results

Teacher pay

- On average, each teacher earned an additional \$1,996 in salary, which includes base and performance monies from fiscal year 2006.

Performance

- The District accomplished its goals, which were based on district and individual performance.
- Student achievement goals were based on standardized test scores.
- Other goals were linked to parent involvement, teacher attendance, and professional development.

Menu

- Monies were used to hire an instructional aide for AIMS intervention.