

Classroom Dollars and Proposition 301 Results

Yavapai Accommodation School District

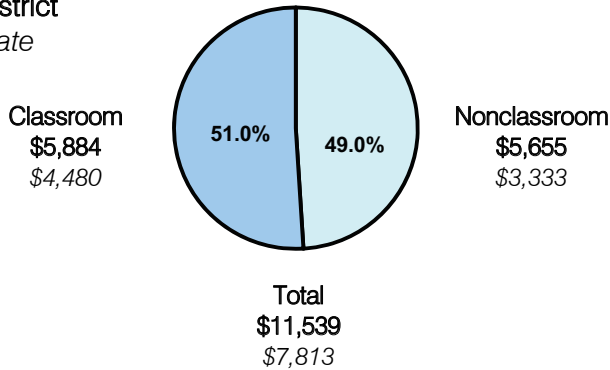
Yavapai County

District size: Very Small
 Students attending: 72
 Number of schools: 1
 Number of certified teachers: 4

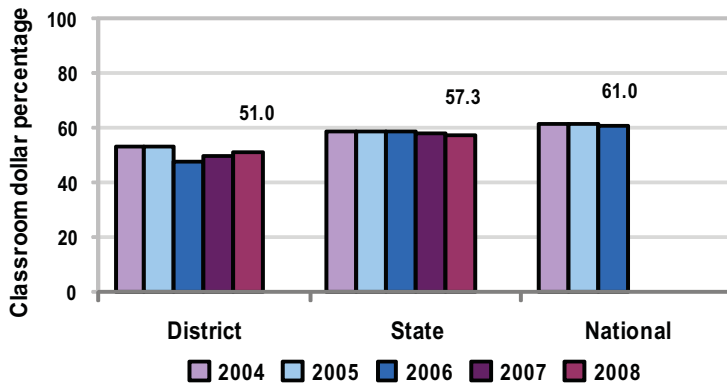
Classroom Dollars

Fiscal year 2008 averages per pupil

District
 State



5-year comparison



Expenditures by function

	Percentage					State 2008	National 2006
	District						
	2004	2005	2006	2007	2008		
Classroom dollars	53.3	53.1	47.7	49.6	51.0	57.3	61.0
Nonclassroom dollars:							
Administration	37.7	30.3	33.6	28.5	25.7	9.2	10.8
Plant operations	3.0	4.6	4.9	4.8	5.3	11.3	9.9
Food service						4.8	3.8
Transportation	1.8	2.4	2.4	2.0	1.5	4.4	4.2
Student support	3.1	8.7	9.8	7.8	11.6	7.4	5.2
Instruction support	0.8	0.9	1.6	7.3	4.9	5.4	4.9
Other	0.3					0.2	0.2

Comparative Information

	District			State 2008
	2006	2007	2008	
Student/teacher ratio	36.0	17.9	18.0	17.3
Average teacher salary	\$46,807	\$36,340	\$38,708	\$44,967
Average years' experience	7.0	6.3	7.0	8.1

Classroom dollar ranking: 170 of 230 districts.

Proposition 301

District-reported 2008 results

Teacher pay

- On average, each teacher earned an additional \$4,783 in salary and each instructional aide earned \$2,123.

Performance

- The District accomplished its goals, which were based on school and individual performance.
- The school earned a "Performing" label from ADE for AZ LEARNS.
- The number of courses successfully completed toward graduation increased 100 percent over the previous year.
- Student achievement was measured using standardized test scores and course grades.
- Satisfactory survey responses were received from parents.
- Teachers received satisfactory performance evaluations and participated in tutoring activities.

Menu

- Monies were used to pay for class registrations and travel costs for professional development activities.