

Young Elementary School District

Gila County

Peer groups: Efficiency 12, Achievement 8

Legislative district(s): 5

District size: Very Small

Students attending: 61

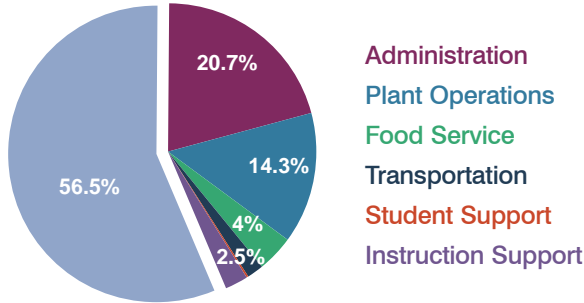
Number of schools: 2

OPERATIONAL EFFICIENCY

Spending by function

Classroom dollars

Nonclassroom dollars

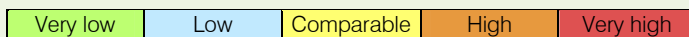


5-year trend

Total spending per pupil increased by 36 percent. Spending in the classroom was very inconsistent year to year, decreasing significantly overall from 60.2 to 56.5 percent. Spending on student and instruction support decreased slightly, while spending in all other nonclassroom areas increased.

District's cost measures relative to peer group

Operational Area	Measure	District	Peer Average	State Average
Administration	Cost per pupil	\$4,850	\$2,444	\$721
	Students per administrator	20	32	66
Plant Operations	Cost per square foot	\$5.46	\$7.59	\$6.25
	Square footage per student	614	297	146
Food Service	Cost per meal equivalent	\$4.90	\$4.85	\$2.41
Transportation	Cost per mile	\$2.83	\$1.87	\$3.35
	Miles per rider	133	611	282

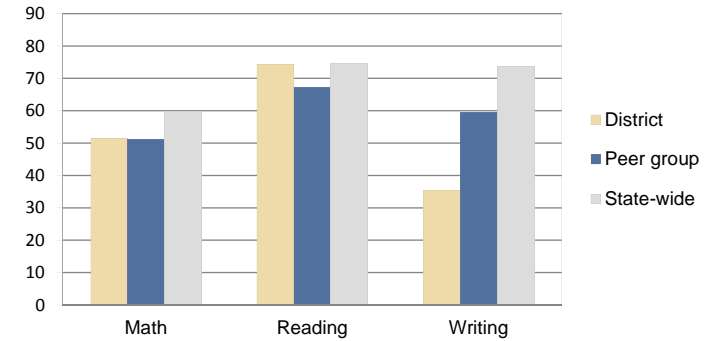


Per-pupil spending by function

	District		Peer 2010	State 2010	National 2008
	2009	2010			
Total	\$27,351	\$23,438	\$15,187	\$7,609	\$10,297
Classroom dollars	\$13,995	\$13,243	\$8,084	\$4,253	\$6,262
Nonclassroom dollars:	\$13,356	\$10,195	\$7,103	\$3,356	\$4,035
Administration	5,827	4,850	2,444	721	1,109
Plant Operations	4,043	3,351	2,188	914	1,003
Food Service	1,269	947	751	366	390
Transportation	1,302	410	924	342	438
Student Support	328	57	473	581	556
Instruction Support	587	580	323	432	539

STUDENT ACHIEVEMENT AND TEACHER INFORMATION

Percentage of students meeting state standards (AIMS)



Adequate Yearly Progress (AYP) toward federal goals

2 schools met all applicable AYP objectives for NCLB.

Student and teacher information

Measure	District	Peer Average	State Average
Attendance rate	94%	94%	94%
Graduation rate (2009)	N/A	N/A	76%
Poverty rate (2009)	32%	34%	21%
Student/teacher ratio	6.4	14.4	17.9
Average teacher salary	\$53,014	\$43,616	\$47,077
Average years' experience	17.1	11.0	10.6
Percent of teachers in first 3 years	0%	20%	20%

Proposition 301

Teacher and other staff pay

On average, each teacher earned \$1,711 in additional pay.

Performance pay plan goals and results

Type of goal	Goal met?
Student achievement	■
Dropout/graduation rates	-
Student attendance	-
Parent/student satisfaction	■
Teacher attendance	-
Teacher professional development	■
Teacher evaluations	-
Tutoring	-
Other	-

■ = yes, □ = no, ▴ = partially, and - = no goal set