

# Classroom Dollars and Proposition 301 Results

## Young Elementary School District

Gila County

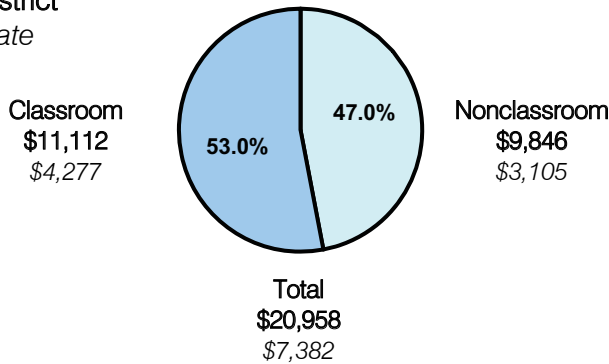
District size: Very Small  
 Students attending: 61  
 Number of schools: 2  
 Number of certified teachers: 8

### Classroom Dollars

Fiscal year 2007 averages per pupil

District

State

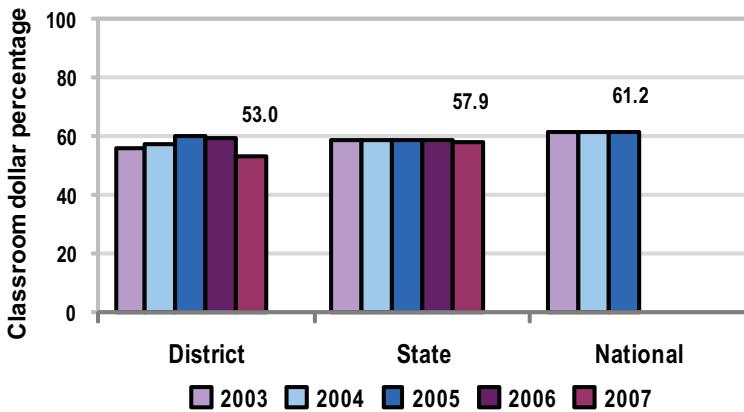


### Comparative Information

	District			State
	2005	2006	2007	2007
Student/teacher ratio	5.9	7.0	8.2	17.4
Average teacher salary	\$38,391	\$44,591	\$41,925	\$43,833
Average years' experience	9.5	9.9	9.6	8.1

Classroom dollar ranking: 151 of 229 districts.

### 5-year comparison



### Expenditures by function

	District					State	National
	2003	2004	2005	2006	2007	2007	2005
Classroom dollars	56.1	56.9	60.2	59.0	53.0	57.9	61.2
Nonclassroom dollars:							
Administration	17.0	19.7	19.2	19.2	23.4	9.5	11.0
Plant operations	16.5	12.8	12.8	15.2	12.7	11.3	9.6
Food service	4.8	4.9	3.5	3.5	3.7	4.7	3.9
Transportation					3.1	4.3	4.1
Student support	1.4	1.5	1.1	0.9	2.4	7.3	5.2
Instruction support	4.2	4.2	3.1	2.1	1.6	4.8	4.8
Other			0.1	0.1	0.1	0.2	0.2

### Proposition 301

#### District-reported 2007 results

##### Teacher pay

- On average, each teacher earned an additional \$2,965 in salary. An instructional aide, a librarian, and 6 classified staff earned an average of \$805 each from menu monies.

##### Performance

- The District accomplished its goals, which were based on district performance.
- Teachers worked together to research and implement student achievement methods and performance measures.
- Communication with parents was increased, and parental involvement was encouraged and tracked.
- Teachers participated in professional development activities and implemented anti-bullying procedures.

##### Menu

- Eligible employees and approximately 6 classified staff were compensated for providing before- and after-school tutoring and meeting or providing support to the District's academic goals.