

Classroom Dollars and Proposition 301 Results

Yucca Elementary School District

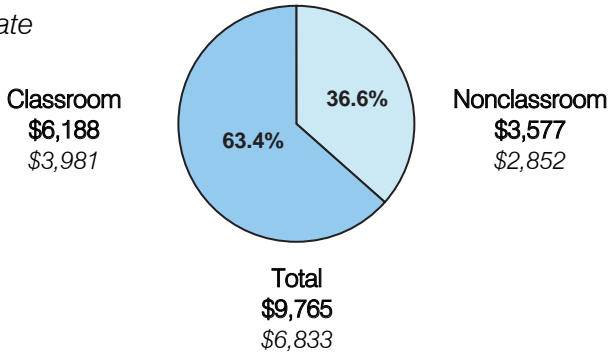
Mohave County

District size: Very Small
 Students attending: 28
 Number of schools: 1
 Number of certified teachers: 3

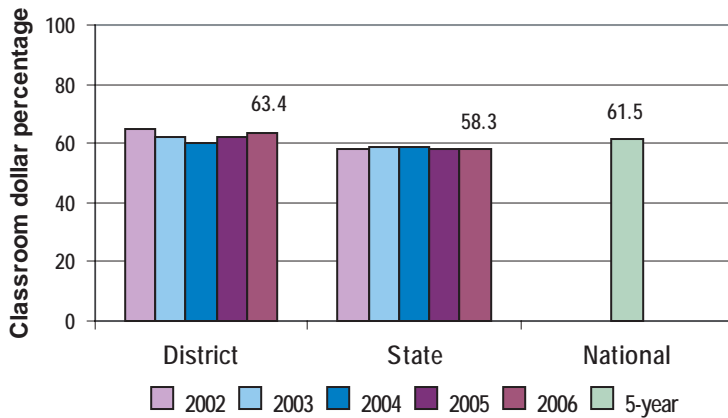
Classroom Dollars

Fiscal year 2006 averages per pupil

District
 State



5-year comparison



Expenditures by function

	Percentage					State 2006	National 5-year
	2002	2003	2004	2005	2006		
Classroom dollars	64.6	62.4	60.0	62.1	63.4	58.3	61.5
Nonclassroom dollars:							
Administration	18.8	21.6	20.9	18.9	19.2	9.4	11.0
Plant operations	7.0	7.9	9.3	8.6	8.3	11.2	9.6
Food service	5.5	5.8	5.3	5.9	5.4	4.7	3.9
Transportation	0.1		0.1	0.6	0.5	4.2	4.0
Student support	3.0	2.3	3.9	2.2	1.8	7.2	5.1
Instruction support	1.0		0.5	1.7	1.4	4.8	4.7
Other						0.2	0.2

Comparative Information

	District			State
	2004	2005	2006	2006
Student/teacher ratio	10.0	10.6	9.5	17.7
Average teacher salary	\$37,207	\$38,102	\$37,145	\$42,967
Average years' experience	5.2	6.0	5.7	8.3

Classroom dollar ranking: 13 of 229 districts.

Proposition 301

District-reported 2006 results

Teacher pay

- On average, each teacher earned an additional \$2,113 in salary.

Performance

- The District accomplished its goals, which were similar to the prior fiscal year's goals and were based on school performance.
- Student and teacher attendance rates of greater than 90 percent were maintained.
- Teachers maintained "highly qualified" status by attending professional development activities.
- The graduation rate was 100 percent.
- Teachers also provided after-school tutoring and developed activities to involve parents.
- Family night attendance increased to 90 percent, and students evaluated teachers quarterly through a survey.

Menu

- Monies were used to increase teacher compensation and for class size reduction.