

Classroom Dollars and Proposition 301 Results

Yucca Elementary School District

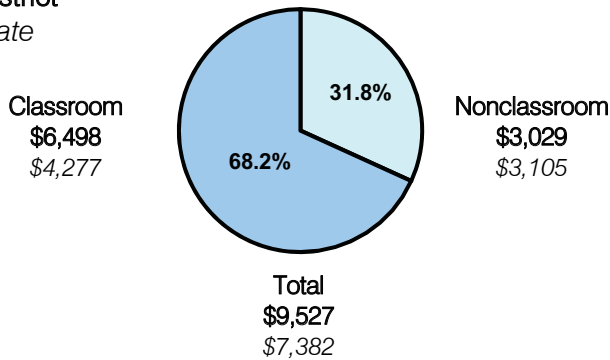
Mohave County

District size: Very Small
 Students attending: 34
 Number of schools: 1
 Number of certified teachers: 3

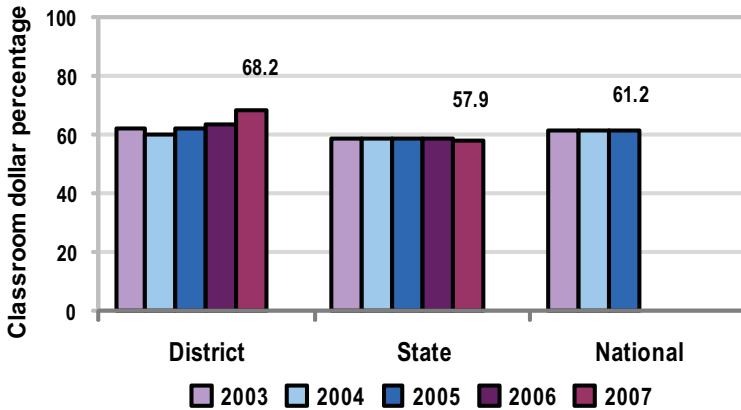
Classroom Dollars

Fiscal year 2007 averages per pupil

District
 State



5-year comparison



Expenditures by function

	Percentage					State 2007	National 2005
	District						
	2003	2004	2005	2006	2007		
Classroom dollars	62.4	60.0	62.1	63.4	68.2	57.9	61.2
Nonclassroom dollars:							
Administration	21.6	20.9	18.9	19.2	17.6	9.5	11.0
Plant operations	7.9	9.3	8.6	8.3	7.2	11.3	9.6
Food service	5.8	5.3	5.9	5.4	4.7	4.7	3.9
Transportation		0.1	0.6	0.5		4.3	4.1
Student support	2.3	3.9	2.2	1.8	1.4	7.3	5.2
Instruction support		0.5	1.7	1.4	0.9	4.8	4.8
Other						0.2	0.2

Comparative Information

	District			State 2007
	2005	2006	2007	
Student/teacher ratio	10.6	9.5	11.5	17.4
Average teacher salary	\$38,102	\$37,145	\$38,263	\$43,833
Average years' experience	6.0	5.7	6.7	8.1

Classroom dollar ranking: 5 of 229 districts.

Proposition 301

District-reported 2007 results

Teacher pay

- On average, each teacher earned an additional \$3,475 in salary.

Performance

- The District accomplished its goals, which were similar to the prior fiscal year's goals and were based on school performance.
- Students demonstrated Adequate Yearly Progress in reading and writing.
- Student and teacher attendance rates of greater than 90 percent were maintained.
- Teachers maintained "highly qualified" status by attending professional development activities.
- The graduation rate was 100 percent.
- Teachers provided before- and after-school tutoring and continued to develop activities to involve parents.
- Other goals were linked to parent-student satisfaction and teacher evaluations.

Menu

- Monies were used to increase teacher compensation.
- Monies were also used to pay 2 instructional aides to help reduce reading and math class sizes.