

# Yuma Elementary School District

Yuma County  
Operational peer group: H  
Legislative districts: 24

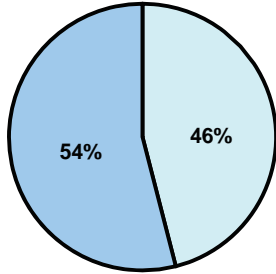
District size: Large  
Students attending: 9,547  
Number of schools: 18

## OPERATIONAL EFFICIENCY

### Average per-pupil spending

District  
State

Classroom  
**\$3,953**  
\$4,497



Nonclassroom  
**\$3,361**  
\$3,411

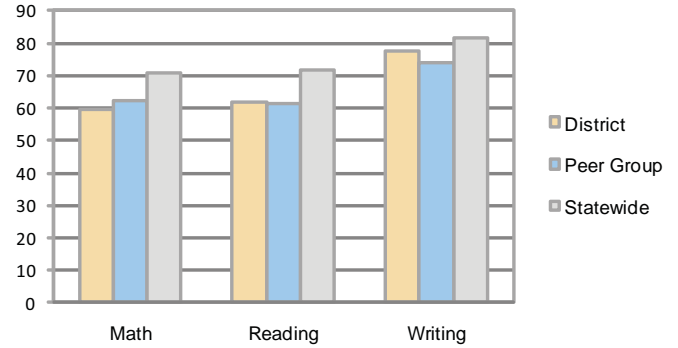
Total  
**\$7,314**  
\$7,908

### 5-year trend

Total spending per pupil increased by 23 percent. Spending in the classroom was very inconsistent year to year and decreased significantly overall from 56.6 to 54 percent. Spending on plant operations and instruction support increased significantly, while spending in other nonclassroom areas remained fairly stable.

## STUDENT ACHIEVEMENT AND TEACHER INFORMATION

### Percentage of students meeting state standards (AIMS)



### Adequate Yearly Progress (AYP) toward federal goals

14 schools met all applicable AYP objectives for NCLB. 4 did not because some students did not demonstrate sufficient academic progress.

### Student and teacher information

Measure	District	Peer average	State average
Attendance rate	95%	95%	95%
Graduation rate (2008)	N/A	74%	75%
Poverty rate	32%	28%	19%
Student/teacher ratio	17.4	18.0	17.1
Average teacher salary	\$37,460	\$48,318	\$45,209
Average years' experience	9.0	8.9	8.3
Percent of teachers in first 3 years	20%	33%	16%

### District's cost measures relative to peer group

Operational Area	Measure	District	Peer Average	State Average
Administration	Cost per pupil	\$686	\$705	\$729
	Students per administrator	56	67	66
Plant Operations	Cost per square foot	\$7.99	\$6.62	\$6.40
	Square footage per student	115	120	144
Food Service	Cost per meal equivalent	\$2.22	\$2.44	\$2.53
Transportation	Cost per mile	\$2.71	\$4.77	\$3.36
	Miles per rider	381	197	271

Very Low    Low    Comparable    High    Very High

### Per-pupil spending by function

	District		Peer	State	National
	2008	2009	2009	2009	2007
<b>Total</b>	<b>\$7,655</b>	<b>\$7,314</b>	<b>\$7,808</b>	<b>\$7,908</b>	<b>\$9,683</b>
<b>Classroom dollars</b>	<b>\$4,037</b>	<b>\$3,953</b>	<b>\$4,486</b>	<b>\$4,497</b>	<b>\$5,903</b>
<b>Nonclassroom dollars:</b>	<b>\$3,618</b>	<b>\$3,361</b>	<b>\$3,322</b>	<b>\$3,411</b>	<b>\$3,780</b>
Administration	801	686	705	729	1,050
Plant Operations	792	920	786	920	951
Food Service	516	508	494	382	369
Transportation	430	391	272	343	406
Student Support	607	442	536	594	512
Instruction Support	472	414	529	431	470
Other	0	0	0	12	22

### Proposition 301

#### Teacher pay

On average, each teacher, librarian, speech pathologist, and counselor earned between \$6,020 and \$6,225 in additional salary.

#### Performance pay plan goals and results

Type of goal	Goal met?
Student achievement	■
Dropout/ graduation rates	
Student attendance	□
Parent/student satisfaction	
Teacher attendance	
Teacher professional development	■
Teacher evaluations	
Tutoring	
Other	■

■ = yes, □ = no, and ▮ = partially