

Classroom Dollars and Proposition 301 Results

Yuma Elementary School District

Yuma County

District size: Large
 Students attending: 9,803
 Number of schools: 19
 Number of certified teachers: 555

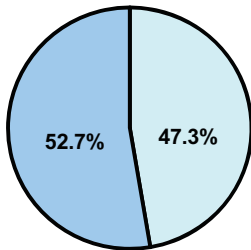
Classroom Dollars

Fiscal year 2008 averages per pupil

District

State

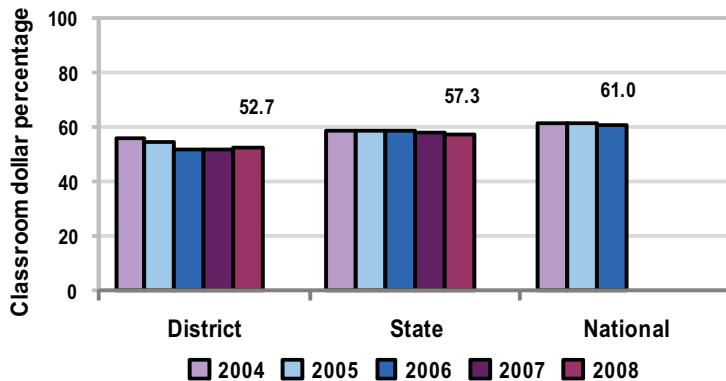
Classroom
 \$4,037
 \$4,480



Nonclassroom
 \$3,618
 \$3,333

Total
 \$7,655
 \$7,813

5-year comparison



Expenditures by function

	Percentage					State 2008	National 2006
	2004	2005	District 2006	2007	2008		
Classroom dollars	56.0	54.5	51.7	51.9	52.7	57.3	61.0
Nonclassroom dollars:							
Administration	10.5	10.0	10.2	9.7	10.5	9.2	10.8
Plant operations	9.9	10.1	9.7	10.9	10.3	11.3	9.9
Food service	6.6	6.3	6.3	6.4	6.7	4.8	3.8
Transportation	5.0	4.8	5.3	5.6	5.6	4.4	4.2
Student support	8.9	8.1	8.4	8.5	8.0	7.4	5.2
Instruction support	3.1	6.2	8.4	7.0	6.2	5.4	4.9
Other						0.2	0.2

Comparative Information

	District			State
	2006	2007	2008	2008
Student/teacher ratio	17.9	18.4	17.7	17.3
Average teacher salary	\$40,171	\$43,565	\$44,753	\$44,967
Average years' experience	8.4	8.4	8.4	8.1

Classroom dollar ranking: 151 of 230 districts.

Proposition 301

District-reported 2008 results

Teacher pay

- On average, each teacher, librarian, and counselor earned an additional \$6,550 in salary.

Performance

- The District accomplished its goals, which were the same as the prior fiscal year's goals and were based on district and individual performance.
- Teachers earned monies for meeting at least 1 of 6 student achievement goals, which included teachers maximizing instruction time and improvements in standardized test scores, writing proficiency, and student attendance rates.
- Other goals called for teachers to attend 15 hours of professional development activities related to literacy assessments, instruction, and intervention, and to participate in school collaboration activities, assessment planning, and interventions.

Menu

- Monies continued to be used to increase eligible employee compensation and employ 8 teachers to reduce class sizes.