

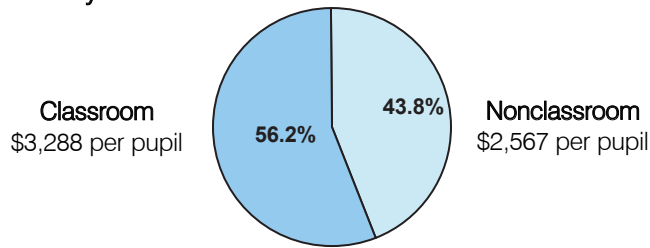
# Classroom Dollars and Proposition 301 Results

## Yuma Elementary School District

District size: Large  
 Students attending: 9,646  
 Number of schools: 17  
 Number of certified teachers: 561

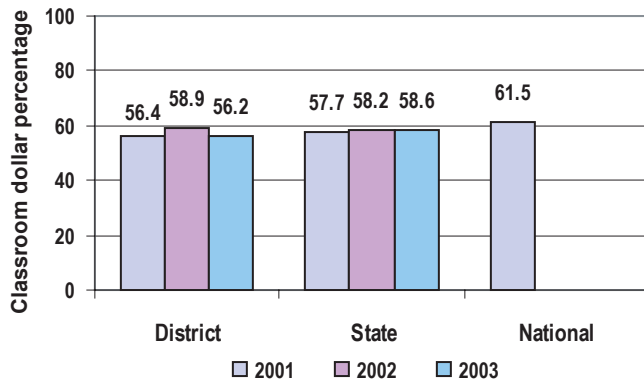
### Classroom Dollars

Fiscal year 2003



Classroom dollar ranking: 117 of 226 districts.

### 3-year comparison



### Expenditures by function

	Percentage				
	District			State	National
	2001	2002	2003	2003	2000
Classroom dollars	56.4	58.9	56.2	58.6	61.7
Nonclassroom dollars:					
Administration	11.2	9.3	9.8	9.9	10.9
Plant operations	8.6	11.4	10.5	11.7	9.6
Food service	6.6	7.4	6.8	4.6	4.0
Transportation	10.2	4.3	4.9	3.9	4.0
Student support	4.4	6.8	8.5	6.8	5.0
Instruction support	2.6	1.9	3.3	4.3	4.5
Other				0.2	0.3

### Comparative Information

	District			State
	2001	2002	2003	2003
Student/teacher ratio	18.6	17.8	17.2	17.9
Average teacher salary	\$33,189	\$37,179	\$38,745	\$40,328
Average years' experience	9.4	9.4	9.2	8.7

### Proposition 301

	2002 Expenditures	2003 Expenditures
Base	\$ 544,548	\$ 580,715
Performance	1,116,979	1,137,233
Menu	1,104,179	1,149,152
Total	<u>\$2,765,706</u>	<u>\$2,867,100</u>

### District-reported 2003 results

#### Teacher pay

- On average, each teacher, librarian, speech pathologist, audiologist, counselor, reading specialist, and site facilitator earned an additional \$3,921 in salary.

#### Performance

- The District accomplished its goals, which were based on district, school, and individual performance.
- District-wide, students demonstrated 1 year's academic progress in reading.
- Teachers completed 18 hours of professional development activities, and participated in planning teams for student assessment and interventions.

#### Menu

- 8 teachers were hired to reduce and balance class sizes.
- Teachers were compensated for participating in professional development activities.